

Article 15. Use Regulations

- 15.1 GENERAL USE REGULATIONS
- 15.2 GLOBAL USE MATRIX
- 15.3 USE DEFINITIONS
- 15.4 PRINCIPAL USES: PRESCRIBED CONDITIONS
- 15.5 TEMPORARY USES: PRESCRIBED CONDITIONS
- 15.6 ACCESSORY USES: PRESCRIBED CONDITIONS

15.1 GENERAL USE REGULATIONS

- A. No structure or land may be used or occupied unless allowed as a permitted, temporary, or accessory use within the zoning district. These use regulations apply to the use of private property, including City-owned property, but exclude the right-of-way.
- B. All uses shall comply with any applicable federal and state requirements, and any additional federal, state, county, and/or city ordinances.
- C. Principal uses are defined to be inclusive of specific uses. The following regulations apply:
 - 1. When a use meets a specific definition, it is regulated as such and cannot be regulated as part of a more inclusive use category.
 - 2. A use that is not explicitly listed in the use matrix will be evaluated by the Zoning Administrator to determine if the use is part of a use listed.
 - 3. A use that is not listed in the use matrix and cannot be interpreted as part of a use listed in the use matrix is prohibited.
- D. All uses shall comply with any prescribed conditions as applicable. Prescribed conditions apply to certain uses within the use matrix to address additional impacts, apply specific design or siting standards, and/or link to additional regulations outside this Ordinance.

15.2 GLOBAL USE MATRIX

- A. Table 15-1: Use Matrix identifies the permitted, temporary, and accessory uses allowed within each zoning district. Uses are defined in Section 15.3.
- B. Table 15-1 shall be applied as follows:
 - 1. An "X" indicates that the use is permitted by-right in the zoning district.
 - 2. A "PC" indicates that the use is allowed in the zoning district and shall comply with the prescribed conditions of this Article (Sections 15.4 through 15.6).
 - 3. A "C" indicates that the use shall require a conditional zoning (Section 37.2).
 - 4. A "C/PC" indicates that the use shall comply with the prescribed conditions of this Article (Sections 15.4 through 15.6) and also shall require a conditional zoning (Section 37.2).
 - 5. A "PC/C" indicates that the use shall comply with the prescribed conditions of this Article (Sections 15.4 through 15.6), and a conditional zoning (Section 37.2) shall also be required in certain circumstances.
 - 6. A shaded blank cell indicates the use is not allowed in the zoning district.

Table 15-1: Use Matrix
Neighborhood 1 Zoning Districts, Neighborhood 2 Zoning Districts, MHP Zoning District, Commercial Zoning Districts, Campus Zoning Districts

| Uses | Zoning Districts | | | | | | | | | | | | | | | |
|--|------------------|-------------|-------------|-------------|-------------|-------------|-------------|-------------|-------------|------------|-----------|-----------|-------------|-------------|------------|-------------|
| | N1-A | N1-B | N1-C | N1-D | N1-E | N1-F | N2-A | N2-B | N2-C | MHP | CG | CR | IC-1 | IC-2 | OFC | RC-1 |
| Residential Uses | N1-A | N1-B | N1-C | N1-D | N1-E | N1-F | N2-A | N2-B | N2-C | MHP | CG | CR | IC-1 | IC-2 | OFC | RC-1 |
| Adult Care Home | PC | PC | PC | PC | PC | PC | PC | PC | | | | | | | | |
| Childcare Center in Residence | PC | PC | PC | PC | PC | PC | PC | PC | | | | | | | | |
| Dormitory | | | | | | | | PC | PC | | | | | | | X |
| Dwelling - Live Work | | | | | | | | X | X | | | | | | | X |
| Dwelling - Manufactured Home | | | | | | | | | | X | | | | | | |
| Dwelling – Duplex | X | X | X | X | X | X | X | PC | | | | | | | | |
| Multi-Family Dwelling Attached Unit | | | | | | PC | PC | PC | PC | | PC | PC | | | | PC |
| Multi-Family Dwelling Stacked Unit | | | | | | X | | X | X | | PC | PC | | | | X |
| Dwelling – Quadraplex | PC | PC | PC | PC | PC | X | X | PC | | | | | | | | X |
| Dwelling – Single-Family | X | X | X | X | X | X | X | PC | | | | | | | | |
| Dwelling – Townhouse | | | | | | PC | PC | PC | PC | | | | | | | PC |
| Dwelling – Triplex | X | X | X | X | X | X | X | PC | | | | | | | | |
| Family Childcare Home | PC | PC | PC | PC | PC | PC | PC | PC | | | | | | | | |
| Group Home | PC | PC | PC | PC | PC | PC | PC | PC | PC | | | | | | | PC |
| Manufactured Home Park | | | | | | | | | | X | | | | | | |
| Multi-Dwelling Development | | | | | | PC | PC | PC | PC | | PC | PC | | | | PC |
| Residential Care Facility | | | | | | | | PC | PC | | | | | | | X |
| Rooming House | PC | PC | PC | PC | PC | PC | PC | PC | | | | | | | | |
| Single Room Occupancy (SRO) | | | | | | | PC | PC | PC | | | | | | | PC |
| Commercial Uses | N1-A | N1-B | N1-C | N1-D | N1-E | N1-F | N2-A | N2-B | N2-C | MHP | CG | CR | IC-1 | IC-2 | OFC | RC-1 |
| Adult Electronic Gaming Establishment | | | | | | | | | | | PC | PC | | | | |
| Adult Use | | | | | | | | | | | PC | PC | | | | |
| Amusement Facility - Indoor | | | | | | | | | | | PC | PC | | | | PC |
| Amusement Facility - Outdoor | | | | | | | | | | | PC | PC | | | | |
| Animal Care Facility | | | | | | | | | | | PC | PC | | | | |
| Animal Shelter | | | | | | | | | | | PC | PC | | | | |
| Art Gallery | | | | | | | | | | | X | X | | | | X |
| Arts or Fitness Studio | | | | | | | | | | | X | X | | | | X |
| Bed and Breakfast | PC | PC | PC | PC | PC | PC | PC | PC | | | | | | | | |
| Broadcasting Facility - No Antennae | | | | | | | | | | | X | X | | | | X |
| Broadcasting Facility - With Antennae | | | | | | | | | | | | PC | | | | PC |
| Car Wash | | | | | | | | | | | PC | PC | | | | |
| Commercial Kitchen | | | | | | | | | | | PC | PC | | | | PC |
| Contractor Office with Outdoor Storage | | | | | | | | | | | | | | | | |

Table 15-1: Use Matrix
Neighborhood 1 Zoning Districts, Neighborhood 2 Zoning Districts, MHP Zoning District, Commercial Zoning Districts, Campus Zoning Districts

| Uses | Zoning Districts | | | | | | | | | | | | | | | |
|---|------------------|------|------|------|------|------|------|------|------|-----|------|------|------|------|-----|------|
| | N1-A | N1-B | N1-C | N1-D | N1-E | N1-F | N2-A | N2-B | N2-C | MHP | CG | CR | IC-1 | IC-2 | OFC | RC-1 |
| Convention Center | | | | | | | | | | | | X | | | | X |
| Drive-Through Establishment | | | | | | | | | | | PC | PC | | | | |
| Employment/Labor Service Agency | | | | | | | | | | | PC | PC | | | | |
| Financial Institution | | | | | | | | | | | X | X | | | | X |
| Funeral Home | | | | | | | | | | | PC | PC | | | | |
| Gas Station | | | | | | | | | | | C/PC | C/PC | | | | |
| Greenhouse/Nursery - Retail | | | | | | | | | | | X | X | | | | |
| Greenhouse/Nursery - Wholesale | | | | | | | | | | | | X | | | | |
| Heavy Rental and Service Establishment | | | | | | | | | | | | X | | | | |
| Heavy Retail Establishment | | | | | | | | | | | | X | | | | |
| Hotel/Motel | | | | | | | | | | | X | X | | | | X |
| Industrial Design | | | | | | | | | | | X | X | | | | X |
| Kennel | | | | | | | | | | | | | | | | |
| Live Performance Venue - Indoor | | | | | | | | | | | X | X | | | | X |
| Lodge/Meeting Hall | | | | | | | | | | | X | X | | | | |
| Medical/Dental Office | | | | | | | | | | | X | X | | | | X |
| Micro-Production of Alcohol | | | | | | | | | | | PC | PC | | | | PC |
| Neighborhood Commercial Establishment | PC | PC | PC | PC | PC | PC | PC | PC | PC | | | | | | | |
| Nightclub | | | | | | | | | | | PC | PC | | | | |
| Office | | | | | | | | | | | X | PC | | | | X |
| Outdoor Market | | | | | | | | | | | PC | PC | | | | PC |
| Personal Service Establishment | | | | | | | | | | | X | X | | | | X |
| Raceway/Dragstrip | | | | | | | | | | | | | | | | |
| Reception Facility | | | | | | | | | | | PC | PC | | | | |
| Research and Development (R&D) | | | | | | | | | | | X | X | | | | X |
| Restaurant/Bar | | | | | | | | | | | PC | PC | | | | PC |
| Retail Goods Establishment | | | | | | | | | | | X | X | | | | X |
| Retail Goods: Showroom | | | | | | | | | | | X | X | | | | X |
| Self-Storage Facility: Climate-Controlled | | | | | | | | | | | PC | PC | | | | |
| Self-Storage Facility: Outdoor | | | | | | | | | | | | PC | | | | |
| Shooting Range, Indoor | | | | | | | | | | | | PC | | | | |
| Specialty Food Service | | | | | | | | | | | X | X | | | | X |
| Stadium | | | | | | | | | | | | C | | | | |
| Vehicle Auction Facility | | | | | | | | | | | | | | | | |
| Vehicle Dealership: Enclosed | | | | | | | | | | | X | X | | | | |
| Vehicle Dealership: Outdoor | | | | | | | | | | | PC | X | | | | |
| Vehicle Rental: Enclosed | | | | | | | | | | | X | X | | | | |
| Vehicle Rental: Outdoor | | | | | | | | | | | PC | X | | | | |

Table 15-1: Use Matrix
Neighborhood 1 Zoning Districts, Neighborhood 2 Zoning Districts, MHP Zoning District, Commercial Zoning Districts, Campus Zoning Districts

| Uses | Zoning Districts | | | | | | | | | | | | | | | |
|--|------------------|-------------|-------------|-------------|-------------|-------------|-------------|-------------|-------------|------------|-----------|-----------|-------------|-------------|------------|-------------|
| | N1-A | N1-B | N1-C | N1-D | N1-E | N1-F | N2-A | N2-B | N2-C | MHP | CG | CR | IC-1 | IC-2 | OFC | RC-1 |
| Vehicle Repair Facility: Major | | | | | | | | | | | | | | | | |
| Vehicle Repair Facility: Minor | | | | | | | | | | | C/PC | C/PC | | | | |
| Institutional and Governmental Uses | N1-A | N1-B | N1-C | N1-D | N1-E | N1-F | N2-A | N2-B | N2-C | MHP | CG | CR | IC-1 | IC-2 | OFC | RC-1 |
| Adult Care Center | PC | PC | PC | PC | PC | PC | PC | PC | PC | | PC | PC | | | | |
| Childcare Center | PC | PC | PC | PC | PC | PC | PC | PC | PC | | PC | PC | | | | PC |
| Childcare Center, Large | | | | | | | | | PC | | PC | PC | | | | PC |
| Community Center | X | X | X | X | X | X | X | X | X | | X | X | | | | X |
| Correctional Facility | | | | | | | | | | | | | | | | |
| Cultural Facility | | | | | | | | | | | X | X | | | | X |
| Educational Facility - Pre-School | X | X | X | X | X | X | X | X | X | | X | X | | | | X |
| Educational Facility - Primary or Secondary | PC | PC | PC | PC | PC | PC | X | X | X | | X | X | | | | X |
| Educational Facility - University or College | PC | PC | PC | PC | PC | PC | X | X | X | | X | X | | | | X |
| Educational Facility - Vocational | PC | PC | PC | PC | PC | PC | X | X | X | | X | X | | | | X |
| Government Office/Facility | PC | PC | PC | PC | PC | PC | X | X | X | | X | X | X | X | X | X |
| Place of Worship | X | X | X | X | X | X | X | X | X | | X | X | | | | X |
| Public Safety Facility | PC | PC | PC | PC | PC | PC | X | X | X | | X | X | X | X | X | X |
| Public Works Facility | | | | | | | | | | | | | | | | |
| Public Health and Social Service Uses | N1-A | N1-B | N1-C | N1-D | N1-E | N1-F | N2-A | N2-B | N2-C | MHP | CG | CR | IC-1 | IC-2 | OFC | RC-1 |
| Addiction Treatment Facility, Residential | | | | | | | | | | | | | | | | |
| Alternative Correction Facility | | | | | | | | | | | | | | | | |
| Children's Home | | | | | | | | X | X | | | | | | | |
| Domestic Violence Shelter | X | X | X | X | X | X | X | X | X | | | | | | | |
| Drug Treatment Clinic | | | | | | | | | | | PC | PC | | | | |
| Food Bank | | | | | | | | | | | | | | | | |
| Food Pantry | PC | PC | PC | PC | PC | PC | PC | PC | PC | | X | X | | | | |
| Halfway House | | | | | | | | | | | | | | | | |
| Healthcare Institution | | | | | | | | | | | X | X | | | | X |
| Homeless Shelter | | | | | | | | | | | PC | PC | | | | |
| Social Service Facility | | | | | | | | | | | X | X | | | | |
| Campus Uses | N1-A | N1-B | N1-C | N1-D | N1-E | N1-F | N2-A | N2-B | N2-C | MHP | CG | CR | IC-1 | IC-2 | OFC | RC-1 |
| Continuum Care Retirement Community (CCRC) | | | | | | | | | | | | | PC | PC | | |
| Educational Campus | | | | | | | | | | | | | X | X | | |
| Government Campus | | | | | | | | | | | | | X | X | | |
| Medical Campus | | | | | | | | | | | | | PC | PC | | |
| Office Campus | | | | | | | | | | | | | | | PC | |
| Religious Campus | | | | | | | | | | | | | PC | PC | | |
| Social Service Campus | | | | | | | | | | | | | X | X | | |
| Industrial Uses | N1-A | N1-B | N1-C | N1-D | N1-E | N1-F | N2-A | N2-B | N2-C | MHP | CG | CR | IC-1 | IC-2 | OFC | RC-1 |
| Agriculture - Industrial Processes | | | | | | | | | | | | | | | | |

Table 15-1: Use Matrix
Neighborhood 1 Zoning Districts, Neighborhood 2 Zoning Districts, MHP Zoning District, Commercial Zoning Districts, Campus Zoning Districts

| Uses | Zoning Districts | | | | | | | | | | | | | | | |
|--|------------------|-------------|-------------|-------------|-------------|-------------|-------------|-------------|-------------|------------|-----------|-----------|-------------|-------------|------------|-------------|
| | N1-A | N1-B | N1-C | N1-D | N1-E | N1-F | N2-A | N2-B | N2-C | MHP | CG | CR | IC-1 | IC-2 | OFC | RC-1 |
| Airport | | | | | | | | | | | | | | | | |
| Airstrip | | | | | | | | | | | | | | | | |
| Beneficial Fill Site | PC | PC | PC | PC | PC | PC | PC | PC | PC | PC | PC | PC | PC | PC | PC | PC |
| Crematorium | | | | | | | | | | | | | | | | |
| Industrial, Craft | | | | | | | | | | | X | X | | | | PC |
| Industrial, General | | | | | | | | | | | | | | | | |
| Industrial, Light | | | | | | | | | | | | | | | | PC |
| Landfill, Land Clearing & Inert Debris (LCID) | PC | PC | PC | PC | PC | PC | PC | PC | PC | PC | PC | PC | PC | PC | PC | PC |
| Light Assembly | | | | | | | | | | | | | | | | PC |
| Movie Studio | | | | | | | | | | | C/PC | C/PC | | | | C/PC |
| Outdoor Storage Yard | | | | | | | | | | | | | | | | |
| Quarry | | | | | | | | | | | | | | | | |
| Rail Freight Terminal | | | | | | | | | | | | | | | | |
| Recycling Collection Center | | | | | | | | | | | | | | | | |
| Salvage and/or Junk Yard | | | | | | | | | | | | | | | | |
| Solar Farm | | | | | | | | | | | X | X | | | | |
| Truck Terminal | | | | | | | | | | | | | | | | |
| Warehouse and Distribution Center | | | | | | | | | | | | | | | | |
| Waste Management Facility | | | | | | | | | | | | | | | | |
| Wholesale Goods Establishment | | | | | | | | | | | | X | | | | |
| Wind Farm | | | | | | | | | | | | | | | | |
| Transportation Uses | N1-A | N1-B | N1-C | N1-D | N1-E | N1-F | N2-A | N2-B | N2-C | MHP | CG | CR | IC-1 | IC-2 | OFC | RC-1 |
| Parking Lot (Principal Use) | | | | | | | | | | | X | X | | | | |
| Parking Structure (Principal Use) | | | | | | | | | | | X | X | | | | X |
| Passenger Terminal | | | | | | | | | | | | X | | | | |
| Public Transit Facility | PC | PC | PC | PC | PC | PC | X | X | X | | X | X | | | | X |
| Truck Stop | | | | | | | | | | | | | | | | |
| Vehicle Operations Facility | | | | | | | | | | | | X | | | | |
| Open Space, Recreation, and Agricultural Uses | N1-A | N1-B | N1-C | N1-D | N1-E | N1-F | N2-A | N2-B | N2-C | MHP | CG | CR | IC-1 | IC-2 | OFC | RC-1 |
| Boarding Stables, Commercial | PC | PC | PC | PC | PC | PC | | | | | | | | | | |
| Campground | C/PC | C/PC | C/PC | C/PC | C/PC | C/PC | | | | | | | | | | |
| Cemetery | PC | PC | PC | PC | PC | PC | PC | PC | PC | | PC | PC | | | | |
| Conservation Area | PC | PC | PC | PC | PC | PC | PC | PC | PC | | PC | PC | PC | PC | PC | PC |
| Community Garden | PC | PC | PC | PC | PC | PC | PC | PC | PC | | | | | | | PC |
| Driving Range | | | | | | | | | | | X | X | | | | |
| Farm | PC | PC | PC | PC | PC | PC | PC | PC | PC | | | | | | | |
| Farm, Bona Fide - Charlotte ETJ Only | X | X | X | X | X | X | X | X | X | X | X | X | X | X | X | X |
| Golf Course | X | X | X | X | X | X | X | X | X | | X | X | | | | |
| Marina | C/PC | C/PC | C/PC | C/PC | C/PC | C/PC | C/PC | C/PC | C/PC | | | | | | | |

Table 15-1: Use Matrix
Neighborhood 1 Zoning Districts, Neighborhood 2 Zoning Districts, MHP Zoning District, Commercial Zoning Districts, Campus Zoning Districts

| Uses | Zoning Districts | | | | | | | | | | | | | | | |
|---|------------------|-------------|-------------|-------------|-------------|-------------|-------------|-------------|-------------|------------|-----------|-----------|-------------|-------------|------------|-------------|
| | N1-A | N1-B | N1-C | N1-D | N1-E | N1-F | N2-A | N2-B | N2-C | MHP | CG | CR | IC-1 | IC-2 | OFC | RC-1 |
| Private Recreation Club | X | X | X | X | X | X | X | X | X | | | | | | | |
| Public Park | PC | PC | PC | PC | PC | PC | PC | PC | PC | PC | PC | PC | PC | PC | PC | PC |
| Infrastructure | N1-A | N1-B | N1-C | N1-D | N1-E | N1-F | N2-A | N2-B | N2-C | MHP | CG | CR | IC-1 | IC-2 | OFC | RC-1 |
| Utility (Includes Transmission & Distribution) | PC | PC | PC | PC | PC | PC | PC | PC | PC | PC | PC | PC | PC | PC | PC | PC |
| Wireless Telecommunications | PC | PC | PC | PC | PC | PC | PC | PC | PC | PC | PC | PC | PC | PC | PC | PC |
| Temporary Uses | N1-A | N1-B | N1-C | N1-D | N1-E | N1-F | N2-A | N2-B | N2-C | MHP | CG | CR | IC-1 | IC-2 | OFC | RC-1 |
| Mobile Car Wash | | | | | | | | | | | PC | PC | | | | |
| Mobile Food Vendor | PC | PC | PC | PC | PC | PC | PC | PC | PC | PC | PC | PC | PC | PC | PC | PC |
| Mobile Retail Vendor | PC | PC | PC | PC | PC | PC | PC | PC | PC | PC | PC | PC | PC | PC | PC | PC |
| Real Estate Project Sales Office | PC | PC | PC | PC | PC | PC | PC | PC | PC | PC | PC | PC | PC | PC | PC | PC |
| Temporary Contractor's Office and Contractor's Yard | PC | PC | PC | PC | PC | PC | PC | PC | PC | PC | PC | PC | PC | PC | PC | PC |
| Temporary Outdoor Entertainment | PC | PC | PC | PC | PC | PC | PC | PC | PC | PC | PC | PC | PC | PC | PC | PC |
| Temporary Outdoor Sales | PC | PC | PC | PC | PC | PC | PC | PC | PC | PC | PC | PC | PC | PC | PC | PC |
| Temporary Outdoor Storage Container | PC | PC | PC | PC | PC | PC | PC | PC | PC | PC | PC | PC | PC | PC | PC | PC |
| Accessory Uses | N1-A | N1-B | N1-C | N1-D | N1-E | N1-F | N2-A | N2-B | N2-C | MHP | CG | CR | IC-1 | IC-2 | OFC | RC-1 |
| <u>Accessory Drive-Through</u> | | | | | | | | | | | PC/C | PC/C | | | | |
| Accessory Shelter | PC | PC | PC | PC | PC | PC | PC | PC | PC | | PC | PC | PC | PC | PC | PC |
| Childcare Center, Accessory to Employment | | | | | | | | | | | X | X | | | | X |
| <u>Drive-Through Facility</u> | | | | | | | | | | | PG | PG | | | | |
| Dwelling - Accessory Unit (ADU) | PC | PC | PC | PC | PC | PC | PC | PC | | | | | | | | |
| Helistop | | | | | | | | | | | | | | | | PC |
| Home Occupation | PC | PC | PC | PC | PC | PC | PC | PC | PC | PC | | | | | | |
| Outdoor Entertainment | | | | | | | | | | | PC | PC | | | | |
| Outdoor Sales and Display | PC | PC | PC | PC | PC | PC | PC | PC | PC | | PC | PC | | | | |
| Outdoor Seating/Activity Area | | | | | | | | | | | PC | PC | | | | PC |
| Private Stables | PC | PC | PC | PC | PC | PC | | | | | | | | | | |

| Table 15-1: Use Matrix | | | | | | | | | | | | | |
|---|------------------|-------------|------------|-----------|--------------|--------------|------------|-----------|-----------|---------------|---------------|---------------|---------------|
| Manufacturing and Logistics Zoning Districts, Neighborhood Center Zoning Districts, Community Activity Center Zoning Districts, Regional Activity Center Zoning Districts, Transit Oriented Development Zoning Districts | | | | | | | | | | | | | |
| Uses | Zoning Districts | | | | | | | | | | | | |
| | ML-1 | ML-2 | IMU | NC | CAC-1 | CAC-2 | RAC | UC | UE | TOD-UC | TOD-NC | TOD-CC | TOD-TR |
| Residential Uses | ML-1 | ML-2 | IMU | NC | CAC-1 | CAC-2 | RAC | UC | UE | TOD-UC | TOD-NC | TOD-CC | TOD-TR |
| Adult Care Home | | | | | | | | | | | | | |
| Childcare Center in Residence | | | | | | | | | | | | | |
| Dormitory | | | X | X | X | X | X | X | X | X | X | X | X |
| Dwelling - Live Work | | | X | X | X | X | X | X | X | X | X | X | X |
| Dwelling - Manufactured Home | | | | | | | | | | | | | |
| Dwelling – Duplex | | | | | | | | | | | | | |
| Multi-Family Dwelling Attached Unit | | | PC | PC | PC | PC | PC | PC | PC | PC | PC | PC | PC |
| Multi-Family Dwelling Stacked Unit | | | X | X | X | X | X | X | X | X | X | X | X |
| Dwelling – Quadraplex | | | | | | | | | | | | | |
| Dwelling – Single-Family | | | | | | | | | | | | | |
| Dwelling – Townhouse | | | PC | PC | PC | PC | PC | | PC | | PC | PC | PC |
| Dwelling – Triplex | | | | | | | | | | | | | |
| Family Childcare Home | | | | | | | | | | | | | |
| Group Home | | | PC | PC | PC | PC | PC | PC | PC | PC | PC | PC | PC |
| Manufactured Home Park | | | | | | | | | | | | | |
| Multi-Dwelling Development | | | PC | PC | PC | PC | PC | PC | PC | PC | PC | PC | PC |
| Residential Care Facility | | | X | X | X | X | X | | | X | X | X | X |
| Rooming House | | | | | | | | | | | | | |
| Single Room Occupancy (SRO) | | | PC | PC | PC | PC | PC | PC | PC | PC | PC | PC | PC |
| Commercial Uses | ML-1 | ML-2 | IMU | NC | CAC-1 | CAC-2 | RAC | UC | UE | TOD-UC | TOD-NC | TOD-CC | TOD-TR |
| Adult Electronic Gaming Establishment | PC | PC | | | | | | | | | | | |
| Adult Use | PC | PC | | | | | | | | | | | |
| Amusement Facility - Indoor | | | PC | PC | PC | PC | PC | PC | PC | PC | PC | PC | PC |
| Amusement Facility - Outdoor | PC | | | | | | | | | | | | |
| Animal Care Facility | | | PC | PC | PC | PC | PC | PC | PC | PC | PC | PC | PC |
| Animal Shelter | PC | | PC | | | | | | | | | | |
| Art Gallery | | | X | X | X | X | X | X | X | X | X | X | X |
| Arts or Fitness Studio | | | X | X | X | X | X | X | X | X | X | X | X |
| Bed and Breakfast | | | | | | | | | | | | | |
| Broadcasting Facility - No Antennae | | | X | | X | X | X | X | X | X | X | X | X |
| Broadcasting Facility - With Antennae | PC | PC | | | | | | | | | | | |
| Car Wash | | | | | | | | | | | | | |
| Commercial Kitchen | PC | | PC | | | | | | | | | | |
| Contractor Office with Outdoor Storage | PC | PC | | | | | | | | | | | |
| Convention Center | | | | | | | X | X | | X | | X | |

Table 15-1: Use Matrix
Manufacturing and Logistics Zoning Districts, Neighborhood Center Zoning Districts, Community Activity Center Zoning Districts,
Regional Activity Center Zoning Districts, Transit Oriented Development Zoning Districts

| Uses | Zoning Districts | | | | | | | | | | | | |
|---|------------------|------|------|------|-------|-------|-----|----|----|--------|--------|--------|--------|
| | ML-1 | ML-2 | IMU | NC | CAC-1 | CAC-2 | RAC | UC | UE | TOD-UC | TOD-NC | TOD-CC | TOD-TR |
| Drive-Through Establishment | PC | PC | | | | | | | | | | | |
| Employment/Labor Service Agency | PC | PC | | | | | | | | | | | |
| Financial Institution | | | X | X | X | X | X | X | X | X | X | X | X |
| Funeral Home | | | | | | | | | | | | | |
| Gas Station | C/PC | C/PC | C/PC | C/PC | C/PC | C/PC | | | | | | | C/PC |
| Greenhouse/Nursery - Retail | | | | | | | | | | | | | |
| Greenhouse/Nursery - Wholesale | X | | | | | | | | | | | | |
| Heavy Rental and Service Establishment | X | | | | | | | | | | | | |
| Heavy Retail Establishment | X | | | | | | | | | | | | |
| Hotel/Motel | | | X | | X | X | X | X | X | X | | X | |
| Industrial Design | X | X | X | X | X | X | X | X | X | X | X | X | X |
| Kennel | PC | | | | | | | | | | | | |
| Live Performance Venue - Indoor | | | X | X | X | X | X | X | X | X | X | X | X |
| Lodge/Meeting Hall | | | X | X | X | X | X | X | X | X | X | X | X |
| Medical/Dental Office | | | X | X | X | X | X | X | X | X | X | X | X |
| Micro-Production of Alcohol | | | PC | PC | PC | PC | PC | PC | PC | PC | PC | PC | PC |
| Neighborhood Commercial Establishment | | | | | | | | | | | | | |
| Nightclub | | | PC | | PC | PC | PC | PC | PC | PC | PC | PC | PC |
| Office | PC | PC | X | X | X | X | X | X | X | X | X | X | X |
| Outdoor Market | | | PC | PC | PC | PC | PC | PC | PC | PC | PC | PC | PC |
| Personal Service Establishment | | | X | X | X | X | X | X | X | X | X | X | X |
| Raceway/Dragstrip | | C | | | | | | | | | | | |
| Reception Facility | | | PC | PC | PC | PC | PC | PC | PC | PC | PC | PC | PC |
| Research and Development (R&D) | X | X | X | | X | X | X | X | X | X | X | X | X |
| Restaurant/Bar | PC | PC | PC | PC | PC | PC | PC | PC | PC | PC | PC | PC | PC |
| Retail Goods Establishment | | | X | X | X | X | X | X | X | X | X | X | X |
| Retail Goods: Showroom | X | | X | X | X | X | X | X | X | X | X | X | X |
| Self-Storage Facility: Climate-Controlled | PC | | PC | | PC | | | | | | | | PC |
| Self-Storage Facility: Outdoor | PC | | | | | | | | | | | | |
| Shooting Range, Indoor | PC | PC | PC | | | | | | | | | | |
| Specialty Food Service | X | | X | X | X | X | X | X | X | X | X | X | X |
| Stadium | C | | | | | | C | C | C | | | | |
| Vehicle Auction Facility | X | X | | | | | | | | | | | |
| Vehicle Dealership: Enclosed | | | X | | X | X | X | X | X | | | | X |
| Vehicle Dealership: Outdoor | X | | | | | | | | | | | | |
| Vehicle Rental: Enclosed | | | X | | X | X | X | X | X | X | X | X | X |
| Vehicle Rental: Outdoor | X | X | | | PC | PC | PC | | | | | | |
| Vehicle Repair Facility: Major | C/PC | C/PC | | | | | | | | | | | |

Table 15-1: Use Matrix
Manufacturing and Logistics Zoning Districts, Neighborhood Center Zoning Districts, Community Activity Center Zoning Districts,
Regional Activity Center Zoning Districts, Transit Oriented Development Zoning Districts

| Uses | Zoning Districts | | | | | | | | | | | | |
|--|------------------|-------------|------------|-----------|--------------|--------------|------------|-----------|-----------|---------------|---------------|---------------|---------------|
| | ML-1 | ML-2 | IMU | NC | CAC-1 | CAC-2 | RAC | UC | UE | TOD-UC | TOD-NC | TOD-CC | TOD-TR |
| Vehicle Repair Facility: Minor | C/PC | | C/PC | C/PC | C/PC | C/PC | | | | | | | C/PC |
| Institutional and Governmental Uses | ML-1 | ML-2 | IMU | NC | CAC-1 | CAC-2 | RAC | UC | UE | TOD-UC | TOD-NC | TOD-CC | TOD-TR |
| Adult Care Center | | | PC | PC | PC | PC | PC | PC | PC | PC | PC | PC | PC |
| Childcare Center | | | PC | PC | PC | PC | PC | PC | PC | PC | PC | PC | PC |
| Childcare Center, Large | | | PC | PC | PC | PC | PC | PC | PC | PC | PC | PC | PC |
| Community Center | | | X | X | X | X | X | X | X | X | X | X | X |
| Correctional Facility | C | C | | | | | | C | | | | | |
| Cultural Facility | | | X | X | X | X | X | X | X | X | X | X | X |
| Educational Facility - Pre-School | | | X | X | X | X | X | X | X | X | X | X | X |
| Educational Facility - Primary or Secondary | | | X | X | X | X | X | X | X | X | X | X | X |
| Educational Facility - University or College | | | X | X | X | X | X | X | X | X | X | X | X |
| Educational Facility - Vocational | X | X | X | X | X | X | X | X | X | X | X | X | X |
| Government Office/Facility | X | X | X | X | X | X | X | X | X | X | X | X | X |
| Place of Worship | | | X | X | X | X | X | X | X | X | X | X | X |
| Public Safety Facility | X | X | X | X | X | X | X | X | X | X | X | X | X |
| Public Works Facility | X | X | | | | | | | | | | | |
| Public Health and Social Service Uses | ML-1 | ML-2 | IMU | NC | CAC-1 | CAC-2 | RAC | UC | UE | TOD-UC | TOD-NC | TOD-CC | TOD-TR |
| Addiction Treatment Facility, Residential | | | X | | X | X | X | X | X | X | X | X | X |
| Alternative Correction Facility | | | PC | | PC | PC | PC | PC | PC | PC | PC | PC | PC |
| Children's Home | | | X | X | X | X | X | X | X | X | X | X | X |
| Domestic Violence Shelter | | | X | X | X | X | X | X | X | X | X | X | X |
| Drug Treatment Clinic | | | | | PC | PC | PC | PC | PC | PC | | PC | |
| Food Bank | X | X | | | | | | | | | | | |
| Food Pantry | X | | X | X | X | X | X | X | X | X | X | X | X |
| Halfway House | | | PC | | PC | PC | PC | PC | PC | PC | PC | PC | PC |
| Healthcare Institution | | | X | | X | X | X | X | X | X | X | X | X |
| Homeless Shelter | PC | PC | PC | PC | PC | PC | PC | PC | PC | PC | PC | PC | PC |
| Social Service Facility | | | X | X | X | X | X | X | X | X | X | X | X |
| Campus Uses | ML-1 | ML-2 | IMU | NC | CAC-1 | CAC-2 | RAC | UC | UE | TOD-UC | TOD-NC | TOD-CC | TOD-TR |
| Continuum Care Retirement Community (CCRC) | | | | | | | | | | | | | |
| Educational Campus | | | | | | | | | | | | | |
| Government Campus | | | | | | | | | | | | | |
| Medical Campus | | | | | | | | | | | | | |
| Office Campus | | | | | | | | | | | | | |
| Religious Campus | | | | | | | | | | | | | |
| Social Service Campus | | | | | | | | | | | | | |
| Industrial Uses | ML-1 | ML-2 | IMU | NC | CAC-1 | CAC-2 | RAC | UC | UE | TOD-UC | TOD-NC | TOD-CC | TOD-TR |
| Agriculture - Industrial Processes | | PC | | | | | | | | | | | |

Table 15-1: Use Matrix
Manufacturing and Logistics Zoning Districts, Neighborhood Center Zoning Districts, Community Activity Center Zoning Districts,
Regional Activity Center Zoning Districts, Transit Oriented Development Zoning Districts

| Uses | Zoning Districts | | | | | | | | | | | | |
|--|------------------|-------------|------------|-----------|--------------|--------------|------------|-----------|-----------|---------------|---------------|---------------|---------------|
| | ML-1 | ML-2 | IMU | NC | CAC-1 | CAC-2 | RAC | UC | UE | TOD-UC | TOD-NC | TOD-CC | TOD-TR |
| Airport | | X | | | | | | | | | | | |
| Airstrip | PC | PC | | | | | | | | | | | |
| Beneficial Fill Site | PC | PC | PC | PC | PC | PC | PC | PC | PC | PC | PC | PC | PC |
| Crematorium | PC | PC | | | | | | | | | | | |
| Industrial, Craft | X | X | PC | | PC | PC | PC | PC | PC | PC | PC | PC | PC |
| Industrial, General | | PC | | | | | | | | | | | |
| Industrial, Light | PC | PC | PC | | | | | | | | | | |
| Landfill, Land Clearing & Inert Debris (LCID) | PC | PC | PC | PC | PC | PC | PC | PC | PC | PC | PC | PC | PC |
| Light Assembly | X | X | PC | | | | | | | | | | |
| Movie Studio | PC | PC | C/PC | C/PC | C/PC | C/PC | C/PC | C/PC | C/PC | C/PC | C/PC | C/PC | C/PC |
| Outdoor Storage Yard | PC | PC | | | | | | | | | | | |
| Quarry | | C/PC | | | | | | | | | | | |
| Rail Freight Terminal | | X | | | | | | | | | | | |
| Recycling Collection Center | PC | PC | | | | | | | | | | | |
| Salvage and/or Junk Yard | | PC | | | | | | | | | | | |
| Solar Farm | X | X | | | | | | | | | | | |
| Truck Terminal | | X | | | | | | | | | | | |
| Warehouse and Distribution Center | X | X | | | | | | | | | | | |
| Waste Management Facility | | PC | | | | | | | | | | | |
| Wholesale Goods Establishment | X | X | | | | | | | | | | | |
| Wind Farm | X | X | | | | | | | | | | | |
| Transportation Uses | ML-1 | ML-2 | IMU | NC | CAC-1 | CAC-2 | RAC | UC | UE | TOD-UC | TOD-NC | TOD-CC | TOD-TR |
| Parking Lot (Principal Use) | X | X | X | X | X | | | | | | X | | X |
| Parking Structure (Principal Use) | X | X | X | | X | X | X | X | X | X | X | X | |
| Passenger Terminal | | | X | | | X | X | X | X | X | | X | |
| Public Transit Facility | X | X | X | X | X | X | X | X | X | X | X | X | X |
| Truck Stop | X | X | | | | | | | | | | | |
| Vehicle Operations Facility | X | X | | | | | | | | | | | |
| Open Space, Recreation, and Agricultural Uses | ML-1 | ML-2 | IMU | NC | CAC-1 | CAC-2 | RAC | UC | UE | TOD-UC | TOD-NC | TOD-CC | TOD-TR |
| Boarding Stables, Commercial | | | | | | | | | | | | | |
| Campground | | | | | | | | | | | | | |
| Cemetery | PC | PC | PC | PC | PC | PC | PC | PC | PC | PC | PC | PC | PC |
| Conservation Area | PC | PC | PC | PC | PC | PC | PC | PC | PC | PC | PC | PC | PC |
| Community Garden | | | PC | PC | PC | PC | PC | PC | PC | PC | PC | PC | PC |
| Driving Range | X | | | | | | | | | | | | |
| Farm | | | | | | | | | | | | | |
| Farm, Bona Fide - Charlotte ETJ Only | X | X | X | X | X | X | X | X | X | X | X | X | X |
| Golf Course | | | | | | | X | | | | | | |

| Table 15-1: Use Matrix | | | | | | | | | | | | | |
|--|------------------|-------------|------------|-----------|--------------|--------------|------------|-----------|-----------|---------------|---------------|---------------|---------------|
| Manufacturing and Logistics Zoning Districts, Neighborhood Center Zoning Districts, Community Activity Center Zoning Districts, Regional Activity Center Zoning Districts, Transit Oriented Development Zoning Districts | | | | | | | | | | | | | |
| Uses | Zoning Districts | | | | | | | | | | | | |
| | ML-1 | ML-2 | IMU | NC | CAC-1 | CAC-2 | RAC | UC | UE | TOD-UC | TOD-NC | TOD-CC | TOD-TR |
| Marina | | | | | | | | | | | | | |
| Private Recreation Club | | | X | X | X | X | X | X | X | X | X | X | X |
| Public Park | PC | PC | PC | PC | PC | PC | PC | PC | PC | PC | PC | PC | PC |
| Infrastructure | ML-1 | ML-2 | IMU | NC | CAC-1 | CAC-2 | RAC | UC | UE | TOD-UC | TOD-NC | TOD-CC | TOD-TR |
| Utility (Includes Transmission & Distribution) | PC | PC | PC | PC | PC | PC | PC | PC | PC | PC | PC | PC | PC |
| Wireless Telecommunications | PC | PC | PC | PC | PC | PC | PC | PC | PC | PC | PC | PC | PC |
| Temporary Uses | ML-1 | ML-2 | IMU | NC | CAC-1 | CAC-2 | RAC | UC | UE | TOD-UC | TOD-NC | TOD-CC | TOD-TR |
| Mobile Car Wash | PC | | | | | | | | | | | | |
| Mobile Food Vendor | PC | PC | PC | PC | PC | PC | PC | PC | PC | PC | PC | PC | PC |
| Mobile Retail Vendor | PC | PC | PC | PC | PC | PC | PC | PC | PC | PC | PC | PC | PC |
| Real Estate Project Sales Office | PC | PC | PC | PC | PC | PC | PC | PC | PC | PC | PC | PC | PC |
| Temporary Contractor's Office and Contractor's Yard | PC | PC | PC | PC | PC | PC | PC | PC | PC | PC | PC | PC | PC |
| Temporary Outdoor Entertainment | | | PC | PC | PC | PC | PC | PC | PC | PC | PC | PC | PC |
| Temporary Outdoor Sales | | | PC | PC | PC | PC | PC | PC | PC | PC | PC | PC | PC |
| Temporary Outdoor Storage Container | PC | PC | PC | PC | PC | PC | PC | PC | PC | PC | PC | PC | PC |
| Accessory Uses | ML-1 | ML-2 | IMU | NC | CAC-1 | CAC-2 | RAC | UC | UE | TOD-UC | TOD-NC | TOD-CC | TOD-TR |
| <u>Accessory Drive-Through</u> | <u>PC</u> | <u>PC</u> | <u>PC</u> | <u>PC</u> | <u>PC</u> | <u>PC</u> | <u>PC</u> | | <u>PC</u> | <u>PC</u> | <u>PC</u> | <u>PC</u> | <u>PC</u> |
| Accessory Shelter | PC | PC | PC | PC | PC | PC | PC | PC | PC | PC | PC | PC | PC |
| Childcare Center, Accessory to Employment | X | X | X | X | X | X | X | X | X | X | X | X | X |
| <u>Drive-Through Facility</u> | <u>PC</u> | <u>PC</u> | <u>PC</u> | <u>PC</u> | <u>PC</u> | <u>PC</u> | <u>PC</u> | | <u>PC</u> | <u>PC</u> | <u>PC</u> | <u>PC</u> | <u>PC</u> |
| Dwelling - Accessory Unit (ADU) | | | | | | | | | | | | | |
| Helistop | PC | PC | | | | | PC | PC | PC | PC | | PC | |
| Home Occupation | | | PC | PC | PC | PC | PC | PC | PC | PC | PC | PC | PC |
| Outdoor Entertainment | | | PC | PC | PC | PC | PC | PC | PC | PC | PC | PC | PC |
| Outdoor Sales and Display | PC | PC | PC | PC | PC | PC | PC | PC | PC | PC | PC | PC | PC |
| Outdoor Seating/Activity Area | PC | PC | PC | PC | PC | PC | PC | PC | PC | PC | PC | PC | PC |
| Private Stables | | | | | | | | | | | | | |

15.3 USE DEFINITIONS

The principal, temporary, and accessory uses in Table 15-1 are defined as follows:

Accessory Drive-Through. That portion of a business where transactions occur directly with customers via a service window, kiosk, or other configuration that allows customers to remain in their vehicle

Accessory Shelter. A housing shelter in an accessory building located on the same site as a principal building, or located on a site owned, and operated by religious, civic, fraternal, social, institutional, or governmental agency providing free accessory lodging for indigent individuals and/or families with no regular home or residential address.

Addiction Treatment Facility, Residential. A licensed care facility that provides 24 hour medical and/or non-medical/therapeutic care of persons seeking rehabilitation and treatment of addiction. Such facilities may include medical detoxification.

Adult Care Center. A facility where an individual, agency, or organization provides supervision or care for more than six adults in a place other than their usual place of abode.

Adult Care Home. A dwelling where housing management provides 24 hour scheduled and unscheduled personal care services care for no more than six adults.

Adult Electronic Gaming Establishment. An establishment where patrons utilize electronic machines, including, but not limited to, computers, gaming tables, and gaming terminals to play games dependent on skill or dexterity in exchange, through redemption and/or other distribution, for cash, merchandise, or other items of value. This definition includes, but is not limited to, arcade, fish arcade, fish game(s), fish table(s), skill arcade, and skilled arcade. This definition does not include any lottery endorsed, approved, or sponsored by the State of North Carolina, or any electronic machines that test a patron's skill or dexterity but do not provide the patron an award of cash, merchandise, or other items of value based on their skill or dexterity.

Adult Use. Any businesses or enterprises that have as one of their principal business purposes or as a significant portion of their business an emphasis on matter and conduct depicting, describing, or related to anatomical areas and sexual activities as specified below and as may be further specified in North Carolina General Statute 14-202.10. An adult use may also be called an "adult establishment."

1. Adult Bookstore. A bookstore:

a. Which receives a majority of its gross income during any calendar month from the sale or rental of publications (including books, magazines, other periodicals, videotapes, compact discs, other photographic, electronic, magnetic, digital, or other imaging medium) which are distinguished or characterized by their emphasis on matter depicting, describing, or relating to specified sexual activities or specified anatomical areas, as defined in this section; or

b. Having as a preponderance (either in terms of the weight and importance of the material or in terms of greater volume of materials) of its publications (including books, magazines, other periodicals, videotapes, compact discs, other photographic, electronic, magnetic, digital, or other imaging medium) which are distinguished or characterized by their emphasis on matter depicting, describing, or relating to specified sexual activities or specified anatomical areas, as defined in this section.

2. Adult Live Entertainment. Any performance of or involving the actual presence of real people which exhibits specified sexual activities or specified anatomical areas, as defined in this section.

3. Adult Live Entertainment Business. Any establishment or business wherein adult live entertainment is shown for observation by patrons.

4. Adult Motion Picture Theatre. An enclosed building or premises used for presenting motion pictures, a preponderance of which are distinguished or characterized by an emphasis on matter depicting, describing, or relating to specified sexual activities or specified anatomical areas, as defined in this section, for observation by patrons therein. Adult motion picture theatre does not include any adult mini motion picture theatre, as defined in this section.

5. Adult Mini Motion Picture Theatre. An enclosed building with viewing booths designed to hold patrons which is used for presenting motion pictures, a preponderance of which are distinguished or characterized by an emphasis on matter depicting, describing or relating to specified sexual activities or specified

anatomical areas as defined in this section, for observation by patrons therein.

6. Sex Club. An establishment that allows members to engage in specified sexual activities with other patrons, or the exposure of specified anatomical areas. Sex clubs may include, but are not limited to, rooms for the use of members, provision of sexually oriented devices, and organization of sex-related activities.

7. Sexually-Oriented Devices. Without limitation, any artificial or simulated specified anatomical area or other device or paraphernalia that is designed principally for specified sexual activities but shall not mean any contraceptive device.

8. Specified Anatomical Areas.

- a. Less than completely and opaquely covered: 1) human genitals, pubic region; 2) buttock; or 3) female breast below a point immediately above the top of the areola; or
- b. Human male genitals in a discernibly turgid state, even if completely and opaquely covered.

9. Specified Sexual Activities.

- a. Human genitals in a state of sexual stimulation or arousal.
- b. Acts of human masturbation, sexual intercourse or sodomy.
- c. Fondling or other erotic touchings of human genitals, pubic regions, buttocks, or female breasts.

Agriculture - Industrial Processes. A use that involves a variety of operations on crops and/or livestock which typically generate significant dust, noise, odors, pollutants, and/or visual impacts that can adversely affect adjacent properties. This includes, but is not limited to, concentrated animal feeding operations (CAFO), slaughterhouses, mills, dairy farms, and commercial composting.

Airport. Facilities for the takeoff and landing of aircraft, including but not limited to runways, aircraft storage buildings, cargo storage buildings, helicopter pads, air traffic control facilities, informational facilities and devices, terminal buildings, on airport parking products, and airport auxiliary facilities, including fueling, fences, lighting, and antennae systems, on-premise signs, driveways, and access roads. Airport includes aircraft maintenance facilities, aviation instruction facilities, and heliports when part of a larger airport facility. Airport also includes facilities for the aid and comfort of the traveling public.

Airstrip. A runway or landing area designed, used, or intended to be used for the landing and taking off of aircraft.

Alternative Correctional Facility. A residential facility for adults or minors that is court ordered as an alternative to incarceration.

Amusement Facility - Indoor. A facility for spectator and participatory uses conducted within an enclosed building including, but not limited to, movie theaters, arcades, bowling alleys, skating centers, escape room/physical adventure game facilities, and pool halls. An indoor amusement facility may include additional uses as part of the principal use such as, but not limited to, concession stands, restaurants, and retail sales. Indoor amusement facility does not include stadiums.

Amusement Facility - Outdoor. A facility for spectator and participatory uses conducted outdoors or within partially enclosed structures, such as amusement parks, fairgrounds, batting cages, and miniature golf courses. An outdoor amusement facility may include additional uses as part of the principal use such as, but not limited to, concession stands, restaurants, and retail sales. Outdoor amusement facility does not include stadiums.

Animal Care Facility. An establishment which provides care for domestic animals, including veterinary offices for the treatment of animals, where animals may be boarded during their convalescence, pet grooming facilities, animal training centers and clubs, and pet boarding facilities, where animals are boarded during the day and/or for short-term stays by their owners.

Animal Shelter. A facility used to house or contain stray, homeless, abandoned, or unwanted animals and that is owned, operated, or maintained by a public body, an established humane society, animal welfare society, society for the prevention of cruelty to animals, or other nonprofit organization devoted to the welfare, protection, and humane treatment of animals. Animal shelters do not include public facilities that shelter and train canine and/or equine units of public safety agencies.

Art Gallery. An establishment that sells, loans, and/or displays paintings, sculpture, photographs, video art, or other works of art.

Art or Fitness Studio. An establishment where an art or activity is taught, studied, or practiced such as dance, martial arts, photography, pottery, jewelry-making, music, painting, gymnastics, pilates, or yoga. An art or fitness studio also includes private exercise studios for private sessions with trainers and/or private classes.

Bed and Breakfast. A single-family detached dwelling where a resident/owner provides lodging for a daily fee in guest rooms with no in-room cooking facilities (excluding microwaves and mini-refrigerators) and prepares meals for guests.

Beneficial Fill Site. A site operated to recontour land for the purpose of improving land use potential or for other beneficial reuse as defined by the North Carolina Solid Waste Management Rules, 15A NCAC 13B and by N.C.G.S. Chapter 130A. It involves no excavation and accepts only fill material consisting of inert debris or used asphalt or a combination of inert debris and used asphalt. Excavation, grading, and fill activity shall not be considered a beneficial fill site if such activity is confined within the boundaries of a parcel of property or development project and involves uncontaminated soil, gravel, or rock originating on such property or development project.

Boarding Stables, Commercial. A building, or multiple buildings, designed for the keeping and maintenance of horses for a fee or other compensation.

Broadcasting Facility - No Antennae. Communications facilities for radio, internet, television broadcasting and receiving stations, and studios. Broadcasting facility - no antennae does not include facilities with freestanding radio and television towers, but may include dish antennas.

Broadcasting Facility - With Antennae. Communications facilities, including radio, internet, television broadcasting and receiving stations, and studios, and including freestanding antenna towers located outdoors.

Campground. Land used for transient occupancy by camping in tents and recreational vehicles, such as camp trailers, travel trailers, motor homes, or similar movable temporary sleeping quarters.

Car Wash. An establishment for the washing, cleaning, and detailing of motor vehicles or other light duty equipment, whether automatic, by hand, or self-service. The car wash facility may be within an enclosed structure, an open bay structure, or other configurations.

Cemetery. Land and structures, such as columbaria, reserved for the interring of human remains or the interring of animal remains. Cemeteries may include structures for performing religious ceremonies related to the entombment of the deceased, mortuaries, including the sales of items related to the interment of remains, and related accessory structures, such as sheds for the storage of maintenance equipment. Cemeteries may also include crematoriums and embalming facilities.

Childcare Center. An individual, agency, or organization, licensed by the North Carolina Department of Health and Human Services, providing supervision or care on a regular basis to between 13 and 79 children who are not related by blood or marriage to, and who are not the legal wards or foster children of, the supervising adult.

Childcare Center, Accessory to Employment. An individual, agency, or organization, licensed by the North Carolina Department of Health and Human Services, providing supervision or care on a regular basis to children who are not related by blood or marriage to, and who are not the legal wards or foster children of, the supervising adult. A childcare center, accessory to employment is a facility operated solely for the use of employees of a business or businesses, such as offices, industrial uses, or other employment uses, within the development.

Childcare Center in Residence. A facility run by an individual residing in a single family dwelling, that provides supervision or care on a regular basis in the individual's home for six to 12 pre-school children who are not related by blood or marriage to, and who are not the legal wards or foster children of, the supervising adult. A childcare center in residence shall be licensed by the North Carolina Department of Health and Human Services.

Childcare Center, Large. An individual, agency, or organization, licensed by the North Carolina Department of Health and Human Services, providing supervision or care on a regular basis to 80 or more children who are not related by blood or marriage to, and who are not the legal wards or foster children of, the supervising adult.

Children's Home. A residential facility that provides housing for and care to minors who are wards of the state, whose parents or guardians are deceased or otherwise unable or unwilling to care for them.

Commercial Kitchen. A shared commercial grade kitchen in which individuals or businesses prepare value-added food products and meals, usually paying an hourly, daily, weekly, or monthly rate to lease a space shared by others.

Community Center. A facility used as a place of meeting, recreation, or social activity, that is open to the public and is not operated for profit, and offers a variety of educational and community service activities.

Community Garden. Land used to grow and harvest food and non-food crops for personal or group use, consumption, or donation, that is managed and maintained by a group of individuals or a nonprofit.

Conservation Area. Designated open space that preserves and protects natural features, wildlife, and critical environmental features, as well as undeveloped sites of historical or cultural significance. A conservation area may include opportunities for passive recreation, such as hiking trails and lookout structures, and environmental education facilities.

Continuum Care Retirement Community (CCRC). A large-scale residential development that provides continuum of care as residents age. Continuum care retirement community (CCRC) developments include a range of housing and care levels based on senior residents' needs and how those needs progress, from independent living to nursing care. A CCRC development may consist of a range of dwelling types and independent living facilities including single-family, duplex, townhouse, triplex, quadraplex, and multi-family dwellings, and may include both indoor and outdoor recreational facilities for the use of residents and their guests.

Contractor Office with Outdoor Storage. Offices for businesses in the conduct of any landscape or building trade or craft, together with land and/or structures used for the storage of equipment, vehicles, machinery, and/or materials related to and used by the trade or craft. A contractor office with no outdoor storage is considered an Office.

Convention Center. A facility designed and used for conventions, conferences, seminars, product displays, recreation activities, and entertainment functions, along with other operations such as, but not limited to, temporary outdoor displays and food and beverage preparation and service for on-premise consumption.

Correctional Facility. A facility established for the temporary detention of persons while being processed for arrest or detention by law enforcement.

Crematorium. A facility for the cremation of the deceased.

Cultural Facility. A facility open to the public that provides access to cultural exhibits and activities including, but not limited to, museums, cultural or historical centers, noncommercial galleries, historical societies, and libraries. A cultural facility may include additional uses as part of the principal use such as, but not limited to, retail sales of related items and restaurants.

Domestic Violence Shelter. A facility that provides temporary shelter, protection, and support for those escaping domestic violence and intimate partner violence, including victims of human trafficking. A domestic violence shelter also accommodates the minor children of such individuals. The facility may also offer a variety of services to help individuals and their children including counseling and legal guidance. Domestic violence shelters may distinguish populations served by age and/or gender.

Dormitory. A building intended or used principally for sleeping accommodations that is part of an educational or public institution, including religious institutions. A common kitchen and common gathering rooms for social purposes may also be provided.

Drive-Through Establishment. A business where transactions only occur directly with customers via a service window, kiosk, or other configuration where customers remain in their vehicle.

~~**Drive-Through Facility.** That portion of a business where transactions occur directly with customers via a service window, kiosk, or other configuration that allows customers to remain in their vehicle.~~

Driving Range. A tract of land equipped with distance markers, clubs, balls, and tees for practicing the hitting of golf balls.

Drug Treatment Clinic. A licensed facility authorized by the state to administer drugs including, but not limited to, methadone and suboxone, in the treatment, maintenance, or detoxification of persons. Drug treatment clinic also includes needle exchange facilities where injecting drug users (IDUs) may obtain hypodermic needles and associated paraphernalia at little or no cost.

Dwelling - Accessory Unit (ADU). An additional dwelling unit associated with and incidental to a principal dwelling. An accessory dwelling unit (ADU) shall include separate cooking and sanitary facilities and is a complete, separate dwelling unit. The ADU may be within or attached to the principal dwelling unit or within a detached accessory structure, such as a garage. ADUs are not permitted in recreational vehicles, travel trailers, campers, or any other type of motor vehicle.

Dwelling - Live/Work. A principal structure that combines a dwelling unit with a commercial use permitted in the zoning district that is used by one or more of the residents. A live/work dwelling may also include the combination of a dwelling unit with arts-related activities, such as painting, photography, sculpture, music, and film, used by one or more of the residents. Live/work dwellings are subject to the standards for the individual uses contained within this Ordinance. Any area used for commercial space in a live/work dwelling cannot be converted to residential living space if the commercial component is no longer operating.

Dwelling - Manufactured Home. A structure, transportable in one or more sections, which in the traveling mode is eight body feet or more in width, or 40 body feet or more in length, or, when erected on site, is 320 or more square feet; and which is built on a permanent chassis and designed to be used as a dwelling, with or without permanent foundation when connected to the required utilities, including the plumbing, heating, air conditioning, and electrical systems contained therein. Manufactured home includes any structure that meets all of the requirements of this subsection except the size requirements and with respect to which the manufacturer voluntarily files a certification required by the Secretary of HUD and complies with the standards established under the Act.

1. For manufactured homes built before June 15, 1976, manufactured home means a portable manufactured housing unit designed for transportation on its own chassis and placement on a temporary or semi-permanent foundation having a measurement of over 32 feet in length and over eight feet in width. Manufactured home also means a double-wide manufactured home, which is two or more portable manufactured housing units designed for transportation on their own chassis that connect on site for placement on a temporary or semi-permanent foundation having a measurement of over 32 feet in length and over eight feet in width.
2. Modular buildings and modular homes are not considered manufactured homes, and refer to a method of construction.

Dwelling – Duplex. A structure containing two dwelling units.

Dwelling – Multi-Family. A structure containing five or more dwelling units, with dwelling units either stacked or attached horizontally. A multi-family dwelling may be designated senior living when there are age restrictions in place to limit occupancy.

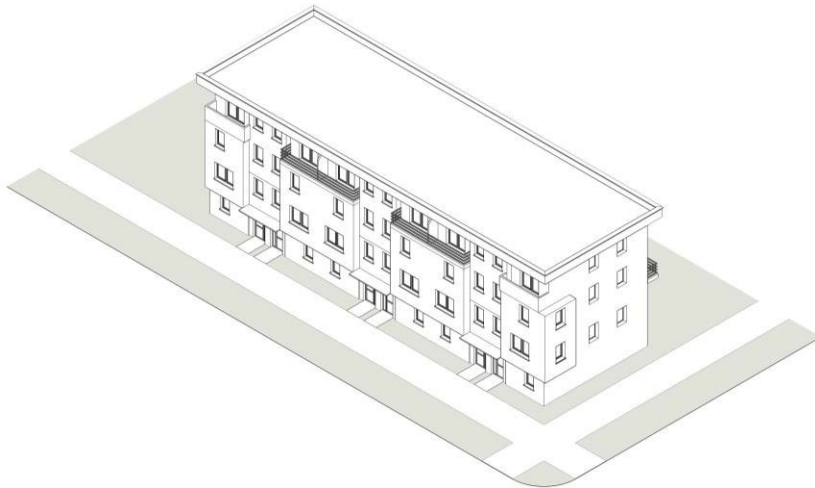
1. **Multi-Family Dwelling Attached Unit.** Attached unit design refers to multi-family residential structure designed with primarily side-by-side dwelling units, each with an individual entry.

MULTI-FAMILY DWELLING ATTACHED UNIT



2. **Multi-Family Dwelling Stacked Unit.** Stacked unit design refers to multi-family residential structure designed with multiple dwelling units accessed by one or more common entryways. Units may have individual entrances for ground floor units.

MULTI-FAMILY DWELLING STACKED UNIT



Dwelling - Quadraplex. A structure containing four dwelling units.

Dwelling – Single-Family. A structure containing only one dwelling unit.

Dwelling – Townhouse. A structure consisting of five or more dwelling units, the interior of which is configured in a manner such that the dwelling units are attached horizontally, separated by a party wall, and each is located on a separate subplot.

Dwelling - Triplex. A structure containing three dwelling units.

Educational Campus. The grounds and buildings of an educational facility, which includes academic buildings, research facilities, dormitories, and other student housing through the educational institution, faculty and staff housing, fraternities/sororities, dining halls and cafeterias for the use of students, teachers, and staff, as well as indoor and outdoor recreational facilities, stadiums, broadcast facility, cultural facilities, and auditoriums that may also accommodate the general public. An educational campus may be a primary or secondary school, a university or college, a vocational school, or a combination of such. For university or college campuses, supportive commercial uses, such as retail goods establishments, personal service establishments, financial institutions, childcare centers, and restaurants, are permitted for the primary use of students, teachers, and staff. Fraternities/sororities shall be a chartered fraternal or sororal membership organization or association, used as a residence and/or a dining and recreational facility for members of organizations or associations who are students at a university, which permits the organization or association to use its facilities because of the relationship of such organization or association to the body of students enrolled in such institution.

Educational Facility - Pre-School. An educational establishment that offers early childhood education prior to the start of required education at the primary school level.

Educational Facility - Primary or Secondary. A facility that offers instruction at the elementary, middle, junior, and/or high school levels, including associated indoor or outdoor recreational facilities.

Educational Facility - University or College. A facility for post-secondary higher learning that grants associate, bachelor, master, and/or doctoral degrees. Such facilities may include additional uses as part of the principal use such as research facilities, dormitories, cafeterias, restaurants, retail sales, childcare facilities, indoor or outdoor recreational facilities, stadiums, and similar uses.

Educational Facility - Vocational. A facility that offers instruction in industrial, clerical, computer, managerial, automotive, repair (electrical, plumbing, carpentry, etc.), or commercial skills, or a business conducted as a commercial enterprise, such as a school for general educational development or driving school. Educational facility - vocational also applies to privately operated schools that do not offer a full educational curriculum.

Employment/Labor Service Agency. A business that provides employment services for temporary or transient employment of semi-skilled and unskilled workers, and operates as a labor pool where workers gather on-site for job placement.

Family Childcare Home. A facility run by an individual that resides in single-family dwelling that provides supervision or care on a regular basis in the individual's home for eight or fewer children who are not related by blood or marriage to, and are not the legal wards or foster children of, the supervising adult. Family childcare homes shall be licensed by the North Carolina Department of Health and Human Services.

Farm. Land used primarily for the growing of crops, produce, and/or flowers. Horses and/or other livestock may also be raised for personal use.

Farm, Bona Fide - Charlotte ETJ Only. A bona fide farm is a farm as defined within N.C.G.S. § 160D-903, or as may be amended, and is located within the Charlotte extraterritorial jurisdiction (ETJ).

Financial Institution. A bank, savings and loan, credit union, or mortgage office. Financial Institutions also include alternative financial service (AFS) that are provided outside a traditional banking institution, including check cashing establishments and currency exchanges.

Food Bank. A non-profit organization that collects and distributes food to hunger relief organizations. Food is not distributed to individuals from a food bank.

Food Pantry. A non-profit organization that provides food directly to individuals. Food pantries receive, buy, store, and distribute food. Food pantries may also prepare meals to be served at no cost to those who receive them.

Funeral Home. An establishment where the dead are prepared for burial display and for rituals before burial or cremation, including chapels for the display of the deceased and the conducting of rituals before burial or cremation, and crematoriums.

Gas Station. An establishment where fuel for vehicles is stored and dispersed from fixed equipment into the fuel tanks of motor vehicles. A gas station may also include retail uses and an accessory car wash bay.

Golf Course. A tract of land design with at least nine holes for playing a game of golf and improved with tees, greens, fairways, and hazards. A golf course may include a clubhouse, restrooms, snack-bar, and pro-shop as additional uses as part of the golf course. A driving range may be included as part of a golf course. A private recreation club may include a golf course as part of the principal use of a private recreation club.

Government Office/Facility. Offices owned, operated, or occupied by a governmental agency to provide a governmental service to the public, such as city offices and post offices. Government offices/facilities do not include public safety or public works facilities.

Government Campus. A development designed to accommodate government offices and facilities in one or more buildings, including public safety and defense facilities, such as police academies and armories, and correctional facilities. Supportive commercial uses for the primary use of government campus staff and visitors, such as retail goods establishments, personal service establishments, financial institutions, childcare centers, and restaurants, are permitted.

Greenhouse/Nursery - Retail. An establishment where flowers, shrubbery, vegetables, trees, and other horticultural and floricultural products are propagated and sold, and may include gardening and landscape supplies and products, such as hardware, garden tools and utensils, paving stones and bricks, and other related items for sale. If all such activities are indoors with no outdoor component (growing, displays, storage, sales), then such use is considered a retail goods establishment.

Greenhouse/Nursery - Wholesale. An establishment where flowers, shrubbery, vegetables, trees, and other horticultural and floricultural products are propagated and sold in bulk to retailers, other professional business users, and/or other wholesalers.

Group Home. Group home means a "Family Care Home" as defined in N.C.G.S § 160D-907. A group home is a home with support and supervisory personnel that provides room and board, personal care, and habilitation services in a family environment for not more than six resident persons with disabilities. Person with disabilities are defined as a person with a temporary or permanent physical, emotional, or mental disability, including, but not limited to, an intellectual or other developmental disability, cerebral palsy, epilepsy, autism, hearing and sight impairments, emotional disturbances, and orthopedic impairments but not including persons with a mental illness who are dangerous to others as defined in G.S. 122C-3(11)b. In addition, a group home also means a residential use, even if it does not conform to the language above, that provides a residential environment which may require various services, living assistance, or supervision but does not include any facility that provides medical services requiring or comparable to on-site, nursing, physician, or medical care for the occupants which is only permitted in a dependent living facility or health.

Halfway House. A residential facility for persons who have been institutionalized for criminal conduct and require a group setting to facilitate the transition to society.

Healthcare Institution. Facilities for primary health services and medical or surgical care to people, primarily in-patient overnight care, and including related facilities such as laboratories, outpatient facilities, dormitories, educational facilities, cafeterias, retail sales, and similar uses.

Heavy Rental and Service Establishment. Rental and/or service establishments of a heavier and larger-scale commercial character typically requiring permanent outdoor service and storage areas and/or partially enclosed structures. Examples of heavy rental and service establishments include truck rental establishments, amusement equipment rental, and rental and repair of heavy equipment.

Heavy Retail Establishment. Retail centers of a heavier and/or larger-scale commercial character typically requiring permanent outdoor storage areas and/or partially enclosed structures. Examples of heavy retail establishments include large-scale home improvement centers with outdoor storage and display, lumberyards, recreational vehicle dealerships, and sales of heavy equipment. Wholesale establishments that sell to the general public, including those establishments where membership is required, are considered heavy retail establishments.

Helistop. Land or part of a structure used for the landing of helicopters.

Home Occupation. An activity carried out for economic gain by a resident, conducted as an accessory use in the resident's dwelling.

Homeless Shelter. A facility that provides overnight, temporary, or transitional shelter and services to the homeless in general.

Hotel/Motel. A commercial facility that provides sleeping accommodations for a fee and customary lodging services. Related accessory uses may include, but are not be limited to, meeting facilities, restaurants, bars, and recreational facilities for the use of guests. A hotel/motel has common facilities for reservations, cleaning services, combined utilities, and on-site management and reception.

Industrial Design. An establishment where the design, marketing, and/or brand development of various products are researched and developed typically integrating the fields of art, business, science, and/or engineering. An industrial design establishment may create prototypes and products, but cannot mass manufacture products on the premises.

Industrial, Craft. Artisan-related crafts and industrial processes that are more intensive uses, such as metalworking, glassblowing, woodworking, furniture making, and food production that includes preparation, processing, canning, or packaging of food products. Micro-production of alcohol is regulated separately from craft industrial.

Industrial, General. The manufacture, fabrication, processing, reduction, and/or destruction of any article, substance, or commodity, or any other treatment thereof, in such a manner as to change the form, character, and/or appearance. General industrial may produce noise, vibrations, illumination, or particulate that is perceptible to adjacent land users.

Industrial, Light. Within a wholly enclosed building, the manufacture, fabrication, processing, reduction, and/or destruction of any article, substance, or commodity, or any other treatment thereof in such a manner as to change the form, character, and/or appearance. A light industrial use may also include a showroom, sales of products related to the items manufactured or stored on-site, and/or outdoor storage.

Kennel. A facility for the breeding and raising of domestic animals for sale.

Landfill, Land Clearing, and Inert Debris (LCID). A facility for the land disposal of inert debris, land clearing debris, yard waste, and untreated and unpainted wood.

Light Assembly. The assembly of previously manufactured parts within a fully enclosed structure that does not create noise, smoke, fumes, odors, glare, or health or safety hazards outside the building.

Live Performance Venue - Indoor. An indoor facility for the presentation of live entertainment, including musical acts and disc jockeys, theatrical plays, stand-up comedy, and similar performances. Performances are scheduled in advance and tickets are required for admission and available for purchase in advance, though tickets may be purchased at the venue's box office on the day of the performance. A live performance venue may include classroom and/or rehearsal space utilized during hours it is not open to the public for a performance. A live performance venue may include concession stands, including sale of alcohol, but only when it is open to the public for a performance. This does not include any adult use or stadium.

Lodge/Meeting Hall. A facility operated by an organization or association for a common purpose, such as, but not limited to, a meeting hall for a fraternal or social organization or a union hall, but not including clubs organized primarily for-profit or to render a service which is customarily carried on as a business.

Manufactured Home Park. A parcel of land with single control or unified ownership that has been planned and improved for the placement of manufactured homes for residential use.

Marina. A facility with navigable water access for docking or storage of boats or providing services to boats and the occupants thereof. Services may include minor servicing and repair to boats while in the water, sale of fuel and supplies, food, beverages, and entertainment as accessory uses. A yacht club is considered a marina.

Medical Campus. The grounds and buildings of a healthcare institution, providing primary health services and medical or surgical care to people, including in-patient overnight care, as well as research and development facilities, medical/dental educational facilities, and medical/dental offices. A medical campus may include dormitories and other housing through the medical institution, dining rooms, cafeterias, gift shops, and pharmacies for the use of staff, patients, and visitors. Supportive commercial uses for the primary use of medical campus staff and visitors, such as retail goods establishments, personal service establishments, financial institutions, childcare centers, and restaurants, are permitted.

Medical/Dental Office. A facility operated by one or more physicians, dentists, chiropractors, psychiatrists, physical therapists, acupuncturists, or other licensed practitioners of the healing arts for the examination and treatment of persons solely on an outpatient basis.

Micro-Production of Alcohol. A facility for the production and packaging of alcoholic beverages, such as beer, wine, spirits, cider, and mead, for distribution and consumption on-premises. A tasting room is an area within the premises of the brewery's production facilities where guests may sample the brewery's products. When the production facilities exceed the maximum square footage allowed by any prescribed conditions, the facility is not considered micro-production of alcohol, but rather an industrial use.

Mobile Car Wash. A temporary service, and its associated equipment, for the washing, cleaning, and detailing of motor vehicles by hand. A mobile car wash operates from a fixed location to offer services to multiple cars on that site for a limited period of time.

Mobile Food Vendor. A motor vehicle or food trailer towed by another vehicle, designed and equipped to sell food and/or beverages directly to consumers. It does not include wholesale food distributors. The vendor physically reports to and operates from an off-site kitchen for servicing, restocking, and maintenance each operating day.

Mobile Retail Vendor. A motor vehicle, or trailer towed by another vehicle, designed and equipped to sell goods directly to consumers. It does not include wholesale distributors. The vendor physically reports to and operates from an off-site facility for servicing, restocking, and maintenance.

Movie Studio. Facilities for the production of motion pictures and film, including stages, exterior sets, film laboratories, sound recording facilities, construction, repair and storage facilities, caretaker and temporary housing, related commercial vehicles, and accessory fabrication activities.

Multi-Dwelling Development. A development consisting of two or more single-family, duplex, triplex, quadraplex, and/or multi-family principal buildings located on a lot or parcel of land under single ownership, and planned and developed with a unified design of buildings and coordinated open space and service areas. Only those dwelling types allowed within the zoning district are allowed within the multi-dwelling development.

Neighborhood Commercial Establishment. Select commercial uses located within a residential neighborhood to serve the surrounding residents.

Nightclub. An establishment that provides entertainment of a participatory nature, including disc jockeys, by providing a place for dancing designed with an area designated as a dance floor, including any stage area; however, portions of the floor area may be set up for alcohol service, including a bar counter, with or without stools, and other seating areas.

Office. An establishment that engages in the processing, manipulation, or application of business information or professional expertise. An office may or may not offer services to the public. An office is not materially involved in fabricating, assembling, or warehousing of physical products for the retail or wholesale market, nor engaged in the repair or sale of products for immediate purchase and removal from the premise by the purchaser.

Office Campus. A development of one or more buildings designed to accommodate offices, corporate headquarters, research and development, broadcast facilities, and/or fully enclosed light assembly with no outdoor storage. An office campus may also include hotels/motels, medical/dental offices, and a healthcare institution of 25,000 square feet or less in gross floor area. Supportive commercial uses for the primary use of office campus staff and visitors, such as of retail goods establishments, personal service establishments, financial institutions, childcare centers, and restaurants, are permitted.

Outdoor Entertainment. Outdoor entertainment as an accessory use means presentation of live entertainment, including musical acts and disc jockeys, theatrical plays, stand-up comedy, and similar live performances, or the presentation of a live or pre-recorded major sporting event, media event, movie, or similar. Outdoor entertainment occurs on the premises of, but outside of, a restaurant, bar, amusement facility, or similar uses. Entertainment occurs outdoors when it is outside a permanently enclosed area.

Outdoor Market. A market consisting of booths, tables, platforms, mobile units, or similar displays where producers and/or growers sell fresh food, flowers and plants, value-added products, and artisan wares at stalls or mobile units in a permanent outdoor location. Individual vendors may operate one or more booths, under the supervision of a market proprietor, who rent or otherwise arrange for assigned space(s) for each vendor.

Outdoor Sales and Display. Part of a lot used for outdoor sales and/or display of goods accessory to the principal use.

Outdoor Seating/Activity Area. An outdoor seating/activity area as an accessory use is located outside the permanent enclosed area, and is used for seating, for food and/or beverage consumption, and/or participatory activities such as trivia or skill games like darts. This includes, but is not limited to, areas such as patios, decks, rooftops, and open areas.

Outdoor Storage Yard. The storage of materials, supplies, equipment, vehicles, and similar items outdoors as the principal use of land. Salvage and/or junk yard is a separate use from outdoor storage yard.

Parking Lot (Principal Use). A lot, which excludes any public or private street, used for the parking of operable vehicles, whether for compensation or at no charge. A parking lot (principal use) is not accessory to or associated with any other use on the same or any other lot.

Parking Structure (Principal Use). A structure or portion of a structure used for the parking of operable vehicles, whether for compensation or at no charge. A parking structure (principal use) is not accessory to or associated with any other use on the same or any other lot.

Passenger Terminal. A facility for the assembly and dispersal of travelling passengers by means of intercity rail, bus, or other mode of transit, including offices for such services, and additional uses such as passenger waiting areas, restaurants, and retail establishments. Passenger terminal does not include airport or CATS public transit facilities.

Personal Service Establishment. An establishment that provides services of a personal nature. Typical uses include, but are not limited to, beauty shops, barbershops, body modification establishments (e.g., tattoos, piercing, etc.), tanning salons, electronics repair shops, bicycle repair shops, nail salons, laundromats, health clubs, dry cleaners, and tailors.

Place of Worship. A facility where persons regularly assemble for religious purposes and related social events, and may include group housing for persons under religious vows or orders. Places of worship may include additional uses as part of the principal use such as childcare facilities, meeting rooms, food preparation and dining areas, auditoriums, and/or classrooms for religious instruction.

Private Recreation Club. An establishment open to members, their families, and invited guests organized and operated for social and recreation purposes and which may include recreation facilities, both indoor and outdoor, restaurants and bars, meeting rooms, and/or similar uses.

Private Stables. The keeping of equines for private use and not for remuneration, hire, or sale.

Public Park. A publicly-owned facility that serves the recreational needs of residents and visitors. Public park includes, but is not limited to, playgrounds, ballfields, football fields, soccer fields, basketball courts, tennis courts, dog parks, skateboard parks, passive recreation areas, and gymnasiums. Public parks may also include noncommercial indoor or outdoor facilities, including zoos, recreational centers, and amphitheaters, additional uses such as, but not limited to, restaurant and retail establishments, and temporary outdoor uses such as festivals and performances. Greenways are not considered a public park (see Article 2 for greenway definition).

Public Safety Facility. A facility operated by and for the use of public safety agencies, such as the fire department and the police department, including the dispatch, storage, and maintenance of police and fire vehicles, and training exercises. Public safety facilities include shelter and training facilities for canine and equine units of public safety agencies.

Public Transit Facility. Facilities operated as part of the public transit system, which shall include park-and-ride lots, park-n-ride garage, station platforms, bus transfer stations, rideshare mobility hubs, and other transit appurtenances required for the operations and use of public transit service. For the purposes of this Ordinance, bus shelters and rapid transit shelters that are not fully enclosed are not considered buildings.

Public Works Facility. A facility operated by and for the use of the municipal public works departments or other governmental agency to provide municipal services, including dispatch, storage, and maintenance of municipal vehicles and training exercises.

Quarry. A type of open pit mine in which dimension stone, rock, construction aggregate, riprap, sand, gravel, or slate is excavated from the ground.

Raceway/Dragstrip. A facility built for racing of vehicles that may include grandstands and/or concourses for viewing. A raceway/dragstrip may also include additional uses as part of the principal use such as, but not limited to, concession stands, restaurants, and retail sales.

Rail Freight Terminal. A heavy rail facility for freight pick-up or distribution that may include intermodal distribution facilities for truck or shipping transport.

Real Estate Project Sales Office. A real estate project sales office is a residential unit, commercial space, or standalone structure within a development that is temporarily used as a sales or leasing office.

Reception Facility. A facility that provides hosting and rental services of a banquet hall or similar facilities for private events including, but not limited to, wedding receptions, holiday parties, corporate events, and fundraisers, with food and beverages that are prepared and served on-site or by a caterer to invited guests during intermittent dates and hours of operation. Live entertainment may occur as part of an event. A reception facility is not operated as a restaurant with regular hours of operation.

Recycling Collection Center. An area containing one or more recycling containers operated by a unit of local government, or its designee, which is set aside and used by members of the public, including business entities, to collect recyclable materials, such as paper, plastics, glass, and cardboard. A recycling collection center may also collect household chemicals and computer equipment, including, but not limited to, household cleaners, oil-based paints, solvents, cell phones, compact fluorescent light bulbs, and computers.

Religious Campus. The grounds and buildings of a place of worship where regular assembly of persons for religious purposes and related social events occurs and which is maintained and controlled by a religious body organized to sustain religious ceremonies and purposes. A religious campus may include supporting office uses, childcare centers, and classrooms for religious study. Supportive commercial uses for the primary use of religious campus staff and visitors, such as retail goods establishments, personal service establishments, and restaurants, are permitted.

Research and Development (R&D). A facility where research and development are conducted in industries that include, but are not limited to, biotechnology, pharmaceuticals, medical instrumentation or supplies, communication, information technology, electronics and instrumentation, and computer hardware and software.

Residential Care Facility. A licensed care facility that provides 24-hour medical and/or non-medical care of persons in need of personal services, supervision, or assistance essential for sustaining the activities of daily living, or for the protection of the individual. A residential care facility includes nursing care, assisted living, hospice care, and continuum of care facilities. Continuum of care facilities may also include independent living facilities as part of the continuum.

Restaurant/Bar. An establishment where food and/or alcoholic beverages are provided to the public for on-premises consumption and/or food may be sold for off-premise consumption through carry-out service.

Retail Goods Establishment. An establishment that provides physical goods, products, or merchandise directly to the consumer, where such goods are typically available for immediate purchase and removal from the premises by the purchaser. A retail goods establishment does not include specialty food service.

Retail Goods Showroom. An establishment where products are displayed for sale, such as furniture, appliances, carpet, tile, or furnishings. Products are available for purchase but are typically not available for immediate removal from the premises.

Rooming House. A single-family dwelling where the property owner, who resides on-site, makes rooms available to tenants for compensation for a minimum of a seven consecutive day lease, and a common kitchen and common areas are shared between the owner and tenants.

Salvage and/or Junk Yard. A facility used for the abandonment, sale, storage, collection, or baling of scrap metal, other scrap or discarded materials, waste tire processing or collection area, and/or abandoned vehicles or machinery, or parts thereof.

Self-Storage Facility: Climate-Controlled. A facility for the storage of personal property where individual renters control and access individual storage spaces located within a fully enclosed building that is climate controlled. Sales of related items, such as moving supplies, and facility management offices may also be included.

Self-Storage Facility: Outdoor. A facility for the storage of personal property where individual renters control and access individual storage spaces and where each storage unit has individual access from the outdoors, and which may have areas available for accessory outdoor storage. Sales of related items, such as moving supplies, and facility management offices may also be included.

Shooting Range, Indoor. A facility designed or used for shooting at targets with firearms, and which is completely enclosed within a building or structure. Police facilities for the training and practice of officers is not considered an indoor shooting range but rather a public safety facility.

Single Room Occupancy (SRO). A residential development where single rooms are rented individually as a permanent and/or primary residence, without kitchen or bathroom amenities in the rooms, for a weekly or monthly period of time for compensation. On-site management is provided on a 24 hour basis. A single room occupancy (SRO) has shared bathroom facilities and may have kitchen facilities, where both types of facilities are freely accessed by all building tenants.

Social Service Campus. The grounds and buildings of social service facilities that provide assistance for those recovering from chemical or alcohol dependency; survivors of abuse seeking support; those transitioning from homelessness or prior incarceration; and those with health and disability concerns. A social service campus includes supporting office uses, medical/dental offices, childcare centers, recreational and exercise facilities, food pantries, and community centers. A social service campus may also include supportive housing such as dormitories, multi-family housing through the social service institution, group homes, children's homes, halfway houses, single room occupancy developments, homeless shelters, and domestic violence shelters.

Social Service Facility. A service establishment that provides assistance for those recovering from chemical or alcohol dependency; survivors of abuse seeking support; those transitioning from homelessness or prior incarceration; and those with health and disability concerns. It does not include in-patient, overnight, or living quarters for recipients of the service or for the staff. Such service does not include medical examinations or procedures, medical detoxification, dispensing of drugs or medications, or other treatments normally conducted in a medical office.

Solar Farm. A ground-mounted solar array operated by a public, private, or cooperative company for the generation, transmission, distribution, storage, or processing of solar energy for the purposes of heating and cooling, electricity generation, and/or water heating.

Specialty Food Service. A facility that includes preparation, processing, canning, and/or packaging of food products where all processing is completely enclosed and there are no outside impacts or outdoor storage. Such business specializes in the sale of specific food products, such as a coffee roaster or candy maker, and offers areas for retail sales or restaurants that serve the products processed on-site.

Stadium. A commercial structure with tiers of seats and/or viewing areas around and/or adjacent to a field, court, or stage, intended to be used for the viewing of athletic events, entertainment, concerts, and other public gathering purposes. Stadiums may be indoor or outdoor.

Temporary Contractor's Office and Contractor's Yard. A temporary, portable, or modular structure utilized as a watchman's quarters, construction office, or equipment shed during the construction of a new development. This may include a temporary contractor's yard where materials and equipment are stored in conjunction with a construction project.

Temporary Outdoor Entertainment. A temporary entertainment event within an outdoor space, such as but not limited to the performance of live music, festivals, competitions, fireworks shows, carnivals/ circuses, worship services, and others.

Temporary Outdoor Sales. Temporary uses, which may include temporary structures, where goods are sold, such as consignment auctions, arts and crafts fairs, plant sales, farmers markets, flea markets, rummage sales, and holiday sales, such as Christmas tree lots and pumpkin sales lots. This temporary use category does not include outdoor sales related to a retail goods establishment where such goods are part of the establishment's regular items offered for purchase.

Temporary Outdoor Storage Container. Temporary self-storage containers that are delivered to a residence or business owner for the purpose of storing belongings, and then may be picked up and returned to a warehouse until called for again.

Truck Stop. A facility that provides services to the trucking industry including, but not limited to, dispensing of fuel, repair, truck washes, restaurants, shower facilities, and/or overnight parking, all as part of the facility.

Truck Terminal. A facility for the receipt, transfer, short-term storage, and dispatching of goods transported by truck.

Utility (Includes Transmission and Distribution). Any facility, infrastructure, and/or equipment used for the generation, transmission, storage, or distribution of electric energy, natural or manufactured gas, water, stormwater, cable television, internet, telephone services, or wastewater, between the point of generation and the end user. A utility does not include wireless telecommunications towers, antennas and/or facilities, satellite dish antennas, waste management facilities, recycling collection facilities, or radio, television, or microwave transmission or relay towers. Utility also includes utility operation facilities where all activity occurs indoors.

Vehicle Auction Facility. A facility where vehicles are offered for sale to persons who bid on the vehicles in competition with each other. A vehicle auction facility includes outdoor storage of the vehicles to be sold.

Vehicle Dealership: Enclosed. An establishment that sells or leases new or used automobiles, vans, pick-ups, motorcycles, and/or all-terrain vehicles (ATV), or other similar motorized transportation vehicles with no outdoor storage or display of such vehicles on-site, including within a parking structure. An enclosed motor vehicle dealership may maintain an inventory of the vehicles for sale or lease off-site. Vehicle dealerships do not include truck, trailer, boat, or heavy equipment sales, which are considered heavy retail establishments.

Vehicle Dealership: Outdoor. An establishment that sells or leases new or used automobiles, vans, pick-ups, motorcycles, and/or all-terrain vehicles (ATV), or other similar motorized transportation vehicles with outdoor storage or display of such vehicles on-site. An outdoor motor vehicle dealership may maintain an additional inventory of the vehicles for sale or lease off-site. Vehicle dealerships do not include truck, trailer, boat, or heavy equipment sales, which are considered heavy retail establishments.

Vehicle Operations Facility. A facility for the dispatch, storage, and maintenance of vehicle fleets including, but not limited to, emergency medical care vehicles, taxicabs and similar vehicles for hire, school buses, utility vehicles, delivery vehicles, and public transit vehicle operations and maintenance facilities. Vehicle operations facility does not include a public works or public safety facility.

Vehicle Rental: Enclosed. An establishment that rents motor vehicles and motorcycles, including incidental parking and servicing of vehicles with no outdoor storage and display of such vehicles on-site, including within a parking structure. An enclosed vehicle rental establishment may maintain an inventory of the vehicles for rent off-site.

Vehicle Rental: Outdoor. An establishment that rents motor vehicles and motorcycles, including incidental parking and servicing of vehicles with outdoor storage and display of such vehicles on-site. An outdoor vehicle rental establishment may maintain an additional inventory of the vehicles for rent.

Vehicle Repair Facility: Major. A business that provides services in major reconditioning of worn or damaged motor vehicles, motorcycles, all-terrain vehicles (ATV), recreational vehicles and trailers, towing and collision service, including body, frame, or fender straightening or repair, painting of motor vehicles, interior (e.g., upholstery, dashboard, etc.) reconstruction and/or repairs, and restoration services. A major vehicle repair business may also include services considered minor vehicle repair.

Vehicle Repair Facility: Minor. A business that provides services in minor repairs to motor vehicles and motorcycles, including repair or replacement of cooling, electrical, fuel and exhaust systems, brake adjustments, tire replacement, wheel servicing, alignment, and balancing, realignment, repair and replacement of shock absorbers, and replacement or adjustment of mufflers and tail pipes, hoses, belts, light bulbs, fuses, windshield wipers/wiper blades, grease retainers, and wheel bearings, and similar minor repairs.

Warehouse and Distribution Center. An enclosed facility for the storage and distribution of manufactured products, supplies, and/or equipment.

Waste Management Facility. Facilities for the recovery, disposal, depositing, processing, or storage of solid waste, including waste that requires special handling, such as hazardous waste and medical waste. Waste management facilities include sanitary landfills, construction and demolition landfills, solid waste collection sites, and solid waste transfer stations.

Wholesale Goods Establishment. A business where goods are sold to either retailers, or to industrial, commercial, institutional, or other professional business users, or to other wholesalers and related subordinated services.

Wind Farm. An energy system operated by a public, private, or cooperative company for the generation, transmission, distribution, or processing of wind energy.

Wireless Telecommunications. Towers, antennas, and facilities used to transmit and receive signals that facilitate wireless telecommunications. The following definitions describe the wireless telecommunications infrastructure within the general definition for wireless telecommunications:

1. **Wireless Antenna.** A specific device, the surface of which is used to transmit and/or receive signals transmitted to or from other antennas. This does not include satellite dish antennae.
2. **Wireless Facility.** A structure used to house and protect the equipment necessary for processing telecommunications signals, which may include air conditioning equipment and emergency generators. Facility also includes any necessary equipment that facilitates wireless transmission.
3. **Wireless Tower.** A structure designed and constructed to support one or more wireless telecommunications antennae and including all appurtenant devices attached to it.

15.4 PRINCIPAL USES: PRESCRIBED CONDITIONS

A. Adult Care Center

1. An adult care center shall be licensed by the North Carolina Department of Health and Human Services.

B. Adult Care Home

1. A zoning use permit is required.
2. An adult care home is subject to the standards for a single-family dwelling unless modified by this section.
3. An adult care home shall be licensed by the North Carolina Department of Health and Human Services.
4. New adult care homes in an Neighborhood 1 Zoning District shall be separated from any existing adult care homes by a distance of 800 feet. This standard does not apply when the sites are separated by an arterial, Limited Access road, Parkway, Boulevard, or Avenue or a major topographical feature such as a major stream floodway.

C. Adult Electronic Gaming Establishment

1. A zoning use permit is required.
2. Minimum spacing requirements for adult electronic gaming establishments are as follows:
 - a. All adult electronic gaming establishments shall be separated by a distance of at least 1,000 feet from any Neighborhood 1 or Neighborhood 2 Place Type, educational facility, place of worship, child care center, or public park. An adult electronic gaming establishment lawfully operating as a conforming use is not rendered a nonconforming use by the subsequent location of any Neighborhood 1 or Neighborhood 2 Place Type, educational facility, place of worship, child care center, or public park within the 1,000 foot separation distance.
 - b. All adult electronic gaming establishments shall be separated by a distance of at least 1,000 feet from any other adult electronic gaming establishments.
 - c. No more than one adult electronic gaming establishments may be located within the same structure.
3. Adult electronic gaming establishments may operate from 8:00 a.m. to 10:00 p.m. (local time) each day, seven days per week.
4. The maximum number of machines/computers/tables/terminals for electronic gaming shall be limited to 20.
5. Along frontages, any windows of an adult electronic gaming establishment shall be clear glass allowing for visibility from the exterior through to the interior, with the exception of window signs as allowed by this Ordinance.
6. Adult electronic gaming establishments shall comply with all applicable federal, state, and local laws, including but not limited to, tax code, building code, fire code, and environmental health regulations.
7. The provisions of this section are not subject to variance by the UDO Board of Adjustment.

D. Adult Use

1. All adult uses shall be separated by a distance of at least 1,000 feet from any Neighborhood 1 or Neighborhood 2 Place Type, educational facility, place of worship, child care center, or public park. An adult use lawfully operating as a conforming use is not rendered a nonconforming use by the subsequent location of any Neighborhood 1 or Neighborhood 2 Place Type, educational facility, place of worship, child care center, or public park within the 1,000 foot separation distance.

2. All adult uses shall be separated by a distance of at least 1,000 feet from any other adult use.
3. No more than one adult use may be located within the same structure.

E. Agriculture - Industrial Processes

1. The minimum area for agriculture - industrial processes shall be 20 acres.
2. All animal processing facilities shall be located 250 feet from any lot line.
3. This use is not permitted inside the Charlotte-Douglas International Airport's 65 DNL contour (reference map in Section 14.8)

F. Airstrip

1. An airstrip and all associated structures shall be located 100 feet from any lot line.
2. No part of the airstrip and any associated structures may be located within a required setback.

G. Alternative Correctional Facility

1. An alternative correction facility is subject to the standards for a single-family dwelling unless modified by this section.
2. New alternative correctional facilities shall be separated from existing alternative correctional facilities by a minimum of 800 feet.
3. Alternative correction facilities shall be limited to six residents.

H. Amusement Facility - Indoor

1. All windows and doors shall remain closed between the hours of 11:00 p.m. and 8:00 a.m.

I. Amusement Facility - Outdoor

1. When abutting an Neighborhood 1 or Neighborhood 2 Place Type, the outdoor activity area, including outdoor dining areas and outdoor entertainment areas, shall be located a minimum of 200 feet from such lot line. This does not include parking facilities.

J. Animal Care Facility

1. When abutting a Neighborhood 1 or Neighborhood 2 Place Type, the exterior exercise area shall be located a minimum of at least 200 feet from such lot line.
2. Animal care facilities shall locate exterior pens, runs, training, and exercise areas to the side or rear of the building.
3. All exterior exercise areas shall be completely fenced.
4. Animal care facilities shall locate all overnight boarding indoors.

K. Animal Shelter

1. When abutting a Neighborhood 1 or Neighborhood 2 Place Type, the exterior exercise area shall be located a minimum of 200 feet from such lot line.
2. Animal shelters shall locate exterior exercise areas to the side or rear of the building.
3. All exterior pens, runs, training, and exercise areas shall be completely fenced.
4. Animal shelters shall locate all overnight boarding indoors.

L. Bed and Breakfast

1. A zoning use permit is required.
2. Bed and breakfasts are subject to the standards for a single-family dwelling unless modified by this section.
3. The maximum number of guest rooms permitted is as follows:
 - a. Neighborhood 1 Zoning District: Four guest rooms.
 - b. All other zoning districts when permitted: Eight guest rooms.
4. All guest rooms and the occupants of the premises shall be in the principal residential single-family structure. Separate structures, accessory buildings, and garages are not permitted to be used as living units or guest rooms.
5. All guest rooms shall be accessed from the interior of the building. Separate exterior access to guest rooms is prohibited.
6. Guests are limited to a length of stay of no more than seven consecutive days.
7. Bed and breakfasts may provide food service only to guests lodging in the facility.
8. A property may only be used for either a short-term whole-dwelling rental, bed and breakfast, or rooming house at any one time.

M. Beneficial Fill Site

1. Beneficial fill sites 1/4 acre or greater on one parcel require a zoning use permit and site approval. Beneficial fill sites of less than 1/4 acre on one parcel do not require a zoning use permit or site approval and are exempt from this section, except for items 2, 3, and 4. In addition, item 5 shall be required if the beneficial fill site contains material such as concrete, concrete block, brick, or used asphalt.
2. The site shall be operated only between the hours of 8:00 a.m. and 6:00 p.m. Monday through Saturday.
3. Final fill elements shall match or compliment adjacent surrounding topography. The final contours and drainage patterns of the fill area shall not adversely affect adjacent properties.
4. No fill, which includes used asphalt, shall be placed in any portion of a regulatory floodplain, including both the floodway and flood fringe area.
5. No portion of a beneficial fill site shall be located within 15 feet of any lot line. This includes structures, equipment storage, parking areas, and fill areas. However, during closure of the site, the 15-foot separation area may be filled if necessary to match or compliment adjacent surrounding topography.
6. The location of a beneficial fill site shall be indicated on a recorded plat. A recorded survey of the site is required after completion and must be submitted to the Planning Department.
7. Any such site may not be operated for more than 12 months.

N. Boarding Stables, Commercial

1. The minimum area for a commercial boarding stable shall be two acres.
2. All structures for the keeping and maintenance of animals, equipment, or manure and all manure piles, pits, or bins shall be located a minimum of 50 feet from any lot line.

3. The following activities are permitted as part of the operation of a commercial horse stable:
 - a. Horse auctions.
 - b. Horse breeding.
 - c. Horse clinics.
 - d. Horse demonstrations and exhibitions (horse shows), which may be conducted without a temporary use permit. This excludes spectator sport horse racing, which is prohibited.
 - e. Boarding horses.
 - f. Equine therapy.
 - g. Renting horses for recreational riding.
 - h. Riding lessons.

O. Broadcasting Facility - With Antennae

1. Radio and television tower antennas may exceed the zoning district height limits but shall be separated from any abutting lot line by one foot for every two feet in height above the permitted height.
2. In addition, if a broadcasting facility - with antennae is located on a lot that abuts a Neighborhood 1 or Neighborhood 2 Place Type, the radio or television tower antennas shall be setback from all lot lines a minimum of 110% of the tower height as measured from the base of the antenna.

P. Campground

1. The minimum area for a campground is six acres.
2. Campgrounds shall provide a common recreational area consisting of 100 square feet per campsite or recreational vehicle parking site.
3. Management headquarters, recreational facilities, coin operated laundry facilities, cabins for staff, and other uses and structures customarily associated with the operation of a campground are permitted.
4. Storage of equipment shall be within enclosed structures.
5. Year-round residency is prohibited at any campground. Use of tents or recreational vehicles as a principal residence is prohibited. This excludes any structures erected for an on-site caretaker or manager, which may be a year-round residency.
6. Individual campsites or recreational vehicle parking sites shall be set back a minimum of 100 feet from all lot lines.

Q. Car Wash

1. A Class C landscape yard shall be required along the side and rear lot lines, unless Article 20 requires a higher class of landscape yard.

R. Cemetery

1. Tombstones, crypts, monuments, columbaria, and mausoleums shall be located a minimum of 25 feet from any side or rear lot line that abuts an Neighborhood 1 or Neighborhood 2 Place Type and a minimum of ten feet from any side or rear lot line that abuts any other lot. In addition, they shall be a minimum of 40 feet from any lot line abutting a public or private street.
2. Crematoriums and funeral homes are only permitted within cemeteries of 100 acres or more.

3. All buildings shall be located a minimum of 100 feet from any lot line that abuts a Neighborhood 1 or Neighborhood 2 Place Type. In addition, cemeteries shall be exempt from the following zoning district standards:

- a. Minimum build-to zones and build-to percentages
- b. Building articulation requirements
- c. Minimum transparency requirements
- d. Building design standards (excluding building materials)

S. Childcare Center

- 1. Each facility shall comply with all applicable federal and state regulations. The operator shall be licensed and such license displayed publicly.
- 2. Outdoor play space and equipment shall be located to the rear or side of the principal building.
- 3. In the Neighborhood 1 Zoning Districts, primary vehicular access is only permitted via arterial and collector streets, and limited access roadways where allowed.

T. Childcare Center in Residence

- 1. A zoning use permit is required.
- 2. Childcare centers in residence are subject to the standards for a single-family dwelling unless modified by this section.
- 3. A single-family dwelling containing a childcare center in residence shall be the primary residence of the operator/primary caregiver.
- 4. New childcare center in residence shall be separated from existing family childcare homes and existing childcare center in residence in an Neighborhood 1 Place Type by a distance of 400 feet. This does not include childcare centers operating as part of a place of worship.
- 5. Outdoor play space and play equipment shall be located to the rear of the principal structure.
- 6. A childcare center in residence shall be limited to a maximum of two employees that reside outside of the residence at any one time.
- 7. The operator's children are not included in the count of the number of children allowed.

U. Childcare Center, Large

- 1. Each facility shall comply with all applicable federal and state regulations. The operator shall be licensed and such license displayed publicly.
- 2. Outdoor play space and equipment shall be located to the rear or side of the principal building.

V. Commercial Kitchen

- 1. Outdoor overnight parking and storage of vehicles such as food trucks and trailers associated with a commercial kitchen is prohibited in the IMU and RC-1 Zoning Districts.
- 2. Overnight parking and storage of vehicles such as food trucks and trailers associated with a commercial kitchen are allowed in other zoning districts and require a Class C landscape yard along the side and rear lot lines, unless Article 20 requires a higher class of landscape yard.

W. Community Garden

1. Areas of cultivation and accessory structures shall be set back as follows:
 - a. A minimum of five feet from side and rear lot lines.
 - b. A minimum of ten feet from any lot line abutting a street.
2. Accessory structures shall be limited to 15 feet in height and 120 square feet in area.
3. The keeping of livestock is prohibited.
4. The sale of items grown on-site is prohibited.

X. Conservation Area

1. Conservation areas shall be exempt from the following zoning district standards:
 - a. Minimum lot width and/or area
 - b. Minimum build-to zones and build-to percentages
 - c. Building articulation requirements
 - d. Minimum transparency requirements
 - e. Building design standards (excluding building materials)

Y. Continuum Care Retirement Community (CCRC)

1. To qualify as a continuum care retirement community (CCRC), a development shall include residential care facilities with a minimum combination of at least two of the following uses: independent living, assisted living housing, nursing care facilities, and hospice care, where the average length of stay in these type facilities is more than 45 days.
2. Supportive commercial uses of retail goods establishments, personal service establishments, restaurants, and childcare centers are permitted but are limited to the use of staff, residents, and their guests.

Z. Contractor Office with Outdoor Storage

1. Any outdoor storage area shall be located a minimum of 20 feet from any lot line. However, when abutting an Neighborhood 1 or Neighborhood 2 Place Type, the outdoor storage area shall be located a minimum of 200 feet from a lot line that abuts a Neighborhood 1 or Neighborhood 2 Place Type. No storage is permitted within this setback.
2. A Class C landscape yard is required along all lot lines, unless Article 20 requires a higher class of landscape yard. However, if a higher class of landscape yard is required and does not require a fence or wall, a fence or wall shall still be required.
3. Storage of any kind is prohibited outside the required fence in item 2 above.
4. No items stored within 50 feet of the fence or wall may exceed the height of the fence or wall in the landscape yard.

AA. Crematorium

1. A crematorium shall be located a minimum of 400 feet from any lot line abutting a Neighborhood 1 or Neighborhood 2 Place Type.

BB. Dormitory

1. Dormitories in the Neighborhood 2 Zoning Districts shall be subject to the standards for multi-family dwellings within the zoning district.

CC. Drive-Through Establishment

1. Site must be located in a Commercial or Manufacturing & Logistics Place Type.
2. All drive-through establishments, except restaurants, shall provide a minimum of four stacking spaces per lane or bay, unless additional stacking spaces are specifically required by this Ordinance. Restaurants shall provide a minimum of eight stacking spaces per lane or bay. The space at the service window is counted in this minimum number of stacking spaces.
23. A drive-through lane shall have bail out capability for all vehicles that enter the drive-through lane. The bail out lane shall be a minimum width of ten feet in width and run parallel to the drive-through lane. If a bail out lane is also an interior access drive providing access to parking spaces, the bail out lane is limited to a one-way traffic pattern following the direction of the drive-through lane.
34. Drive-through lanes and drive aisles located between the street and the facade of the building shall require parking lot screening per Section 20.5-.
45. A stacking space shall be a minimum of nine feet in width and 18 feet in length.
56. All components of a drive-through including, but not limited to, signs, stacking lanes, trash receptacles, ordering box, and drive up windows, shall be located to the rear or side of the building.

DD. Drug Treatment Clinic

1. All drug treatment clinics shall be separated by a distance of at least 800 feet from any Neighborhood 1 or Neighborhood 2 Place Type.
2. All drug treatment clinics shall be separated by a distance of at least 800 feet from any other drug treatment clinics.

EE. Dwelling – Duplex

1. In the N2-B Zoning District, duplex dwellings are permitted only as a component of a multi-dwelling development and subject to the standards of the N1-E Zoning District.

FF. Dwelling – Multi-Family Attached

1. Multi-family attached dwellings are limited to a maximum building length of 150 feet. This maximum building length may be increased to 400 feet if vehicular entrances to garages, including areas used for vehicular access to attached or detached garages, are located to the side or rear of the building,
2. If the zoning district limits maximum building length with a stricter standard, such stricter standard controls.
3. For a site zoned CG or CR and located in a Neighborhood Center, Community Activity Center, or Regional Activity Center Place Type, multi-family attached developments are allowed using the dimensional and design standards and open space requirements of the NC zoning district.

FF.1. Dwelling – Multi-Family Stacked

1. For a site zoned CG or CR and located in a Neighborhood Center, Community Activity Center, or Regional Activity Center Place Type, multi-family stacked developments are allowed using the dimensional and design standards and open space requirements of the NC zoning district.

GG. Dwelling - Quadraplex

1. In the Neighborhood 1 Zoning Districts, quadraplex dwellings are permitted only as follows:

a. Quadraplex dwellings are permitted only on arterial streets and a minimum of one unit within the structure shall be set aside for households earning 80% AMI or less. This restriction does not apply to the N1-F Zoning District.

b. In the case of a through lot, a quadraplex is only permitted if both frontages abut arterial streets.

2. In the N2-B Zoning District, quadraplex dwellings are permitted only as a component of a multi-dwelling development and subject to the standards of the N1-E Zoning District.

HH. Dwelling – Single-Family

1. In the N2-B Zoning District, single-family dwellings are permitted only as a component of a multi-dwelling development and subject to the standards of the N1-E Zoning District.

II. Dwelling – Townhouse

1. Townhouse dwelling developments are limited to a maximum building length of 150 feet. This maximum building length may be increased to 400 feet if vehicular entrances to garages, including areas used for vehicular access to attached or detached garages, are located to the side or rear of the building,

2. If the zoning district limits maximum building length with a stricter standard, such stricter standard controls.

JJ. Dwelling - Triplex

1. In the N2-B Zoning District, triplex dwellings are permitted only as a component of a multi-dwelling development and subject to the standards of the N1-E Zoning District.

KK. Educational Facility - Primary or Secondary

1. In the Neighborhood 1 Zoning Districts, primary vehicular access is only permitted via arterial and collector streets, and limited access roadways where allowed.

LL. Educational Facility - University or College

1. In the Neighborhood 1 Zoning Districts, primary vehicular access is only permitted via arterial and collector streets, and limited access roadways where allowed.

MM. Educational Facility - Vocational

1. In the Neighborhood 1 Zoning Districts, primary vehicular access is only permitted via arterial and collector streets, and limited access roadways where allowed.

NN. Employment/Labor Service Agency

1. An employment/labor service agency shall be separated by a distance of at least 800 feet from any other employment/labor service agency.

2. On-site management shall be required during the hours of operation. The manager shall be accessible to clients, law enforcement personnel, and any other individuals who need to establish communication upon or about the premises.

3. The employment/labor service agency shall provide adequate seating for clients in an accessible waiting area. The waiting area shall allow for access to restrooms and water during the hours of operation.

OO. Family Childcare Home

1. A zoning use permit is required.

2. A family childcare home is subject to the standards for a single-family dwelling unless modified by this section.

3. New family childcare homes shall be separated from existing family childcare homes and childcare center in residence in the Neighborhood 1 Place Type by a distance of 400 feet. This does not include childcare centers operating as an accessory use to a place of worship.
4. Outdoor play space and play equipment shall be located to the rear of the principal structure.
5. A family childcare home shall be limited to a maximum of one employee that resides outside of the residence at any one time.
6. The operator's children are not included in the count of the number of children allowed.

PP. Farm

1. Activities that are considered an agriculture - industrial process, as defined in this section, are prohibited.
2. All structures for the keeping of animals shall be located 100 feet from any lot line.
3. Farmstands for the sale of items grown on the farm are permitted.
4. All manure may only be stored in appropriate containers. The containers shall be located at least 250 feet from any from any lot line. A pile containing putrescible refuse and/or manure is prohibited. Spreading of manure is prohibited.

QQ. Food Pantry

1. A food pantry in the Neighborhood 1 and Neighborhood 2 Zoning Districts is permitted as an accessory use to an established nonresidential principal use.

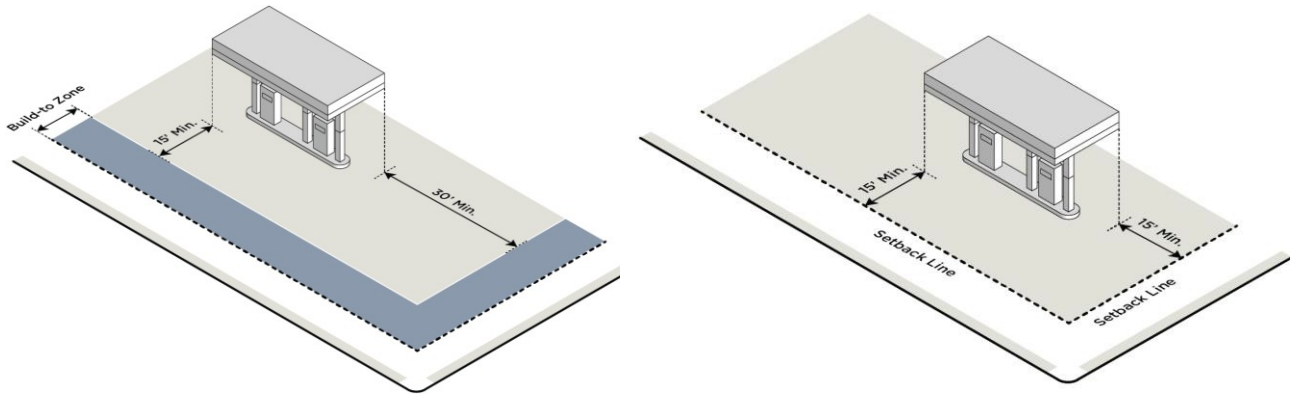
RR. Funeral Home

1. Funeral homes shall have primary vehicular access from a collector or arterial street.

SS. Gas Station

1. Gasoline pump islands shall be located no closer than 15 feet from any frontage setback line. This includes any area of a pad upon which a gas pump is installed.
2. Gas station canopies may be located in required build-to zones but shall be located a minimum of 15 feet from any required setback line abutting a street.
3. Gas stations must meet the standards of the district with the exception of minimum building length as a percentage of lot width along a frontage, minimum ground floor height, and minimum building height.

GAS STATION PUMP ISLAND SETBACKS



TT. Government Office/Facility

1. In the Neighborhood 1 Zoning Districts, primary vehicular access is only permitted via arterial and collector streets, and limited access roadways where allowed.

UU. Group Home

1. A zoning use permit is required.
2. A group home is subject to the standards for a single-family dwelling unless modified by this section.
3. Group homes shall be licensed by the state.
4. Group homes in the Neighborhood 1 Zoning Districts shall be limited to a maximum of six residents. Group homes in all other zoning districts shall be limited to ten residents.
5. New group homes shall be separated from existing group homes in an Neighborhood 1 Place Type by a distance of 800 feet. This standard does not apply in circumstances when the sites are separated by a major thoroughfare, major topographical feature such as a major stream floodway, or by major nonresidential or public uses such as a public park, educational facility, place of worship, or commercial area.

VV. Halfway House

1. Each halfway house shall identify a manager to act as a 24 hour contact.
2. Halfway houses shall be limited to ten residents.
3. The manager contact information shall be printed legibly and posted in such a way as to be conspicuous and readable from the exterior of each building to a person at the front entrance of a building. The posting shall contain the address of the property, the name of the manager of the property, and the phone number of the manager.

WW. Homeless Shelter

1. New homeless shelters shall be separated from existing homeless shelters by a minimum of 800 feet. This separation requirement does not apply in the Commercial Zoning Districts and the Manufacturing and Logistics Zoning Districts.
2. Each homeless shelter shall identify a manager to act as a 24-hour contact.
3. The manager contact information shall be printed legibly and posted in such a way as to be conspicuous and readable from the exterior of each building to a person at the front entrance of a building. The posting shall

contain the address of the property, the name of the manager of the property, and the phone number of the manager.

XX. Industrial, Craft

1. In the IMU and RC-1 Zoning Districts, the following apply:
 - a. Each craft industrial use is limited to a maximum gross square footage of 30,000 square feet.
 - b. To encourage the adaptive reuse of older or underutilized buildings, this maximum area is increased to 60,000 square feet if the use is located in a building constructed prior to 1980.
 - c. Outside storage is prohibited. All business, servicing, processing, and storage uses shall be fully enclosed.

YY. Industrial, General

1. All outdoor storage and activity areas shall be located a minimum of 30 feet from any lot line. However, when abutting a Neighborhood 1 or Neighborhood 2 Place Type, the outdoor storage and activity areas shall be located a minimum of 200 feet from the lot line that abuts a Neighborhood 1 or Neighborhood 2 Place Type. No storage is permitted within this setback.
2. All outdoor storage and activity areas require a Class C landscape yard along all lot lines, unless Article 20 requires a higher class of landscape yard. However, if a higher class of landscape yard is required and does not require a fence or wall, a fence or wall shall still be required. Storage of any kind is prohibited outside the fence.
3. No items stored within 30 feet of the fence or wall may exceed the height of the fence or wall.

ZZ. Industrial, Light

1. In the IMU and RC-1 Zoning Districts, the following apply:
 - a. Outside storage is prohibited. All business, servicing, processing, and storage uses shall be fully enclosed.
 - b. Light industrial uses are limited to a maximum gross square footage of 30,000 square feet.
 - c. To encourage the adaptive reuse of older or underutilized buildings, this maximum area is increased to 60,000 square feet if the use is located in a building constructed prior to 1980.
2. All outdoor storage and activity areas shall be located a minimum of 30 feet from any lot line. However, when abutting a Neighborhood 1 or Neighborhood 2 Place Type, the outdoor storage and activity areas shall be located a minimum of 200 feet from the lot line that abuts a Neighborhood 1 or Neighborhood 2 Place Type. No storage is permitted within this setback.
3. All outdoor storage areas require a Class C landscape yard along all lot lines, unless Article 20 requires a higher class of landscape yard. However, if a higher class of landscape yard is required and does not require a fence or wall, a fence or wall shall still be required. Storage of any kind is prohibited outside the fence.
4. No items stored within 30 feet of the fence or wall may exceed the height of the fence or wall.

AAA. Kennel

1. Any structure for the keeping of animals that is not completely enclosed shall be located between the principal structure and the side or rear lot line.
2. No more than 20% of the established rear setback shall be occupied by such structures. Such structures shall be located ten feet from any lot line.
3. When abutting a Neighborhood 1 or Neighborhood 2 Place Type, any exterior exercise area shall be located a minimum of 200 feet from such lot line.

4. Kennels shall locate exterior pens, runs, training, and exercise areas shall be located between the principal structure and the side or rear lot line.
5. All exterior exercise areas shall be completely fenced.

BBB. Landfill, Land Clearing, and Inert Debris (LCID)

1. A zoning use permit is required.
2. Any on-site LCID landfill shall obtain approval and comply with the size, siting, operational standards, and notice by recordation requirements of the State of North Carolina.
3. An on-site LCID landfill may not be operated for more than 12 months with exception of sites located in the Manufacturing and Logistics Zoning Districts where no portion of the landfill is located within 300 feet of any lot located in a Neighborhood 1 or Neighborhood 2 Zoning District.
 - a. Operation of an on-site LCID landfill in other zoning districts may be extended an additional six months if it remains in active use at the end of the 12 month period and such site is at least 300 feet from an occupied dwelling unit.
4. The location of any such site shall be indicated on any required final subdivision plat. Further, any lot that contains any part of any such site shall have notification of the existence and extent of the site recorded as part of the deed for the lot, even if no subdivision plan is required for development of the property.
5. No portion of the landfill site may be located within 15 feet of any lot lines. This includes structures, equipment storage, parking areas and fill areas; however, access drives may cross this area.
6. In the Neighborhood 1 Zoning Districts, primary vehicular access is only permitted via arterial and collector streets, and limited access roadways where allowed.

CCC. Light Assembly

1. In the IMU and RC-1 Zoning Districts, outside storage is prohibited, and all business, servicing, processing, and storage uses shall be fully enclosed.

DDD. Marina

1. Marinas may include caretaker's residences, docks, fueling and supply facilities, launching and storage facilities, boat servicing facilities, parking areas, maintenance areas, restaurants, boat lifts, launching ramps, boat charter services, and incidental retail sales associated with the principal use.
2. Along any lot line that abuts a use other than another marina, a Class B landscape yard is required, unless Article 20 requires a higher class of landscape yard.
3. Areas used for the drydock/outdoor storage of boats shall be screened along all lot lines by a Class B landscape yard unless Article 20 requires a higher class of landscape yard.

EEE. Medical Campus

1. A medical campus may include standalone medical/dental offices, drug treatment clinics, and similar health services.
2. A medical campus may include residential care facilities, residential addiction treatment facilities, and similar facilities. Long-term stay housing for patient families is permitted.
3. Supportive commercial uses primarily serving medical campus staff, patients, and visitors of the medical campus, such as retail goods establishments, personal service establishments, financial institutions, childcare centers, and restaurants, are permitted but shall be located to minimize attracting outside customers.

FFF. Micro-Production of Alcohol

1. The establishment shall include a restaurant, bar, and/or tasting room within the same building. The minimum size of the restaurant, bar, and/or tasting room shall be 20% of the total square footage of the use or 1,500 square feet, whichever is less.
2. Facilities may include retail areas for the purchase of beverages manufactured on-site and related items.
3. The maximum area that can be used for beverage production within a building is 30,000 square feet. To encourage the adaptive reuse of older or underutilized buildings, this maximum area is increased to 60,000 square feet if the establishment is located in a building constructed prior to 1980.

GGG. Movie Studio

1. A movie studio is not subject to the design standards of a zoning district.

HHH. Multi-Dwelling Development

1. For a site zoned CG or CR and located in a Neighborhood Center, Community Activity Center, or Regional Activity Center Place Type, multi-dwelling developments are allowed using the dimensional and design standards and open space requirements of the NC zoning district unless modified by this section.

42. Each dwelling type in a multi-dwelling development shall meet zoning district dimensional and design standards unless modified by this section.

a. Every residential building on the site shall be separated on every side from any other building by at least ten feet.

b. All portions of every residential building shall be located within 400 feet of a public street or private street that has direct access to the building.

c. Where a multi-dwelling development is served by private streets, angled parking areas directly adjoining private streets will be permitted on one side of the street. Such parking areas may be alternated from one side of the street to the other. The combined length of such parking areas may not exceed 50% of the length of the adjoining roadway. All other angled parking areas shall be clearly separated from the private street by at least a barrier island.

d. Non-network private streets, similar interior vehicular circulation streets, alleys, and surface parking areas on the site shall be no closer than 15 feet to any side of a residential building used for entry into the building and will be no closer than five feet to any other face of a building.

e. Architectural features such as stoops, stairs, chimneys, bay windows, balconies, and roof overhangs may extend into the 15 foot area of item d above, but in no case may they be closer than five feet to the private street, alley, and/or surface parking area. No structural support elements may be located in this area.

f. Parking pads and driveways shall have a minimum length of 20 feet, measured from the back of the sidewalk, back of curb, or edge of pavement, whichever is greater. Along non-network private streets without sidewalks, private drives, and alleys, the driveway apron may be reduced to no more than seven feet behind the back of curb or edge of pavement.

23. On development sites of 30 acres or more in the N2-A and N2-B Zoning Districts, a mix of dwelling types is required. No one dwelling type may constitute more than 90% of the total units in the development.

III. Neighborhood Commercial Establishment

1. In the Neighborhood 1 and Neighborhood 2 Zoning Districts, neighborhood commercial establishments are allowed within existing structures that are nonresidential in their original construction and/or current use as of the effective date of this Ordinance. Such structures cannot be expanded.

2. In the Neighborhood 2 Zoning Districts, new neighborhood commercial establishments are permitted on the ground floor of multi-family stacked dwellings.

3. In the Neighborhood 2 Zoning Districts, new neighborhood commercial establishments are permitted as freestanding structures subject to the following:

- a. Shall be located on corner lots.
 - b. Shall be limited to a maximum gross square footage of 9,000 square feet.
 - c. Shall be limited to a maximum of 48 feet in height.
4. Neighborhood commercial establishments are not subject to the minimum lot sizes for nonresidential uses in Neighborhood 1 and Neighborhood 2 Zoning Districts. All other nonresidential zoning district standards apply.
5. The following commercial uses are permitted within a neighborhood commercial establishment.
- a. Adult care center
 - b. Animal care facility with no outdoor component
 - c. Art gallery
 - d. Art or fitness studio
 - e. Childcare center; any separation requirements for childcare centers do not apply when allowed within a neighborhood commercial establishment
 - f. Medical/dental office
 - g. Office
 - h. Personal service establishment
 - i. Restaurant/bar; sale of alcohol is prohibited in the Neighborhood 1 Zoning Districts
 - j. Retail goods establishment; sale of alcohol is prohibited in the Neighborhood 1 Zoning Districts
 - k. Specialty food service
6. No off-street parking is required when the neighborhood commercial establishment is located within an existing building located in a Neighborhood 1 Zoning District. However, any off-street parking currently provided shall be retained.
7. Drive-through facilities are prohibited.
8. Outdoor seating/activity areas and outdoor sales and display are permitted as an accessory use to a neighborhood commercial establishment. Outside storage is prohibited.

JJJ. Nightclub

- 1. All windows and doors shall remain closed between the hours of 11:00 p.m. and 8:00 a.m.

KKK. Office

- 1. In the CR, ML-1, and ML-2 Zoning Districts, an office use is limited to 25% of gross floor area of a building.

LLL. Office Campus

- 1. Supportive commercial uses for the primary use of office campus staff and visitors, such as retail goods establishments, personal service establishments, financial institutions, childcare centers, and restaurants, are permitted but shall be located to minimize attracting outside customers.

MMM. Outdoor Market

- 1. A zoning use permit is required.

NNN. Outdoor Storage Yard

1. The outdoor storage yard shall be located a minimum of 15 feet from any lot line except where properties zoned the ML-1 or ML-2 Zoning District abut. However, when abutting a Neighborhood 1 and Neighborhood 2 Place Type, the outdoor storage yard shall be located a minimum of 200 feet from the lot line that abuts a Neighborhood 1 or Neighborhood 2 Place Type. No storage is permitted within this separation.
2. The outdoor area requires a Class C landscape yard along all lot lines, unless Article 20 requires a higher class of landscape yard. However, if a higher class of landscape yard is required and does not require a fence or wall, a fence or wall shall still be required. In addition, when abutting a Manufacturing and Logistics Place Type, a landscape yard is not required but a fence shall be required.
3. Storage of any kind is prohibited outside the required fence in item 2 above.
4. No items stored within 30 feet of the fence or wall may exceed the height of the fence or wall.

OOO. Public Park

1. Public parks shall be exempt from the following zoning district standards:
 - a. Minimum lot width and/or area
 - b. Minimum build-to zones and build-to percentages
 - c. Building articulation requirements
 - d. Minimum transparency requirements
 - e. Building design standards (excluding building materials)

PPP. Public Safety Facility

1. In the Neighborhood 1 Zoning Districts, primary vehicular access is only permitted via arterial and collector streets, and limited access roadways where allowed.

QQQ. Public Transit Facility

1. In the Neighborhood 1 Zoning Districts, primary vehicular access is only permitted via arterial and collector streets, and limited access roadways where allowed.

RRR. Quarry

1. The minimum area for a quarry shall be 100 acres.
2. A plan shall be submitted that specifies the anticipated future use of the property, upon the cessation of quarrying activities. The plan shall include provisions for the property owner to create a reserve fund, to be held by the property owner, to finance the initial capital expenses of establishing the anticipated future use of the property. The plan shall include estimates of the amount of such capital expenses, based upon the present costs of such capital expenses and an assumed annual inflationary rate of 5%, and a timetable showing the expected life of the quarry.
3. Required minimum setback from any lot line to:
 - a. Any building or extraction area, road, driveway or pit: 200 feet
 - b. Any crushing of rock, processing of stone, gravel, or other material: 300 feet
 - c. Any blasting: 500 feet
4. A Class A landscape yard is required along all lot lines.
5. During operation of the quarry, the following safety features shall be required:

a. Rock Quarries

- i. From the edge of the pit, an area 20 feet wide shall be maintained free of any soil cover.
- ii. From a point 20 feet from the edge of the pit, the soil cover, if less than 20 feet in depth, shall be graded back to a slope of one foot vertical or less, to one foot horizontal from the rock level to the top of the soil cover.
- iii. If the soil cover to be stripped away exceeds 20 feet in depth, a ditch eight feet wide and three feet deep, at least ten feet back from the edge of the pit, may be substituted for the backsloping. If the pit has reached its maximum expansion in any direction, however, the permanent fence as described in item 9 below, in connection with termination of quarrying operations, will suffice instead of the backsloping or ditching in that particular area.

b. Gravel Quarries and Sand Quarries

When the pit exceeds a depth of 20 feet from the surface of the ground, all dense underbrush shall be removed from the soil cover for a distance of 20 feet from the edge of the pit.

6. Blasting is prohibited on Sunday, and may not occur earlier than 7:00 a.m. or later than 7:00 p.m. on any other day.
7. Vehicular access to the facility shall be provided from an arterial street.
8. A metal fence and gate shall be constructed at the entrance to the quarry site and be closed when the quarry is not in operation. All access driveways, which serve the site for ingress or egress, shall be wide enough to accommodate two lanes of traffic.
9. Upon termination of quarry operations at any pit that exceeds a depth of 20 feet from the surface of the ground, either the pit shall be backfilled to the slope of one foot vertical, or less, to one foot horizontal from the bottom of the pit to the surface of the ground, or a fence designed to prevent access shall be erected and maintained around the pit, or the site shall be otherwise reclaimed in accordance with the reuse plan for the property. If a fence is used, it shall be a minimum six feet high, and a maximum of eight feet high.

SSS. Reception Facility

1. A general admission fee or any other monetary donations (payment at the door to the general public) for entrance is prohibited, with the exception of fundraisers or events for bona fide non-profit organizations, places of worship, or educational facilities.
2. All windows and doors shall remain closed between the hours of 11:00 p.m. and 6:00 a.m.

TTT. Recycling Collection Center

1. All recycling collection containers that are not within an enclosed building shall be located a minimum of 30 feet from any lot line.
2. A Class B landscape yard is required along all lot lines. A solid fence a minimum of six feet to a maximum of eight feet in height is required with exceptions for ingress/egress, which shall be gated.
3. Storage of any kind is prohibited outside the required fence in item 2 above.

UUU. Religious Campus

1. A religious campus may include supportive housing, such as dormitories, group homes, children's homes, halfway houses, homeless shelters, and domestic violence shelters.
2. A religious campus may include community centers and food pantries.
3. Supportive nonresidential uses primarily serving religious campus staff and the congregation, such as retail goods establishments and restaurants, are permitted but shall be located to minimize attracting outside customers.

VVV. Residential Care Facility

1. Residential care facilities in the Neighborhood 2 Zoning Districts shall be subject to the standards for multi-family dwellings within the zoning district.

WWW. Restaurant/Bar

1. Incidental entertainment, which is defined as live or pre-recorded background music, is permitted within a permanent enclosed area.
2. A restaurant/bar may have areas that have been designed for live performances and/or dancing within permanent enclosed areas
3. All windows and doors shall remain closed between the hours of 11:00 p.m. and 6:00 a.m.

XXX. Rooming House

1. A zoning use permit is required.
2. A rooming house is subject to the standards for a single-family dwelling unless modified by this section.
3. The property owner shall reside within the dwelling.
4. All rooming units shall be in the principal residential structure. Separate structures, accessory structures, accessory dwelling units, and garages are not permitted to be used as rooming units.
5. There shall be no separate private entrance for any of the rooming units.
6. A maximum of five boarders is permitted.
7. No signs are permitted.
8. A property may only be used for a short-term whole-dwelling rental, bed and breakfast, or rooming house at any one time.

YYY. Salvage and/or Junk Yard

1. All outdoor storage and processing areas shall be located a minimum of 200 feet from any lot line except for a lot in a Manufacturing and Logistics Place Type.
2. A salvage and/or junk yard shall be located a minimum of 1,000 feet from any lot in a Neighborhood 1 or Neighborhood 2 Place Type.
3. Screening is required as follows:
 - a. A Class A landscape yard is required along all rear and side lot lines. In Zone 1 of the landscape yard, a solid fence a minimum of six feet to a maximum of eight feet in height is required.
 - b. A Class B landscape yard is required along all lot lines abutting a street. A solid fence a minimum of six feet to a maximum of eight feet in height is required with exceptions for ingress/egress, which shall be gated.

ZZZ. Self-Storage Facility: Climate-Controlled

1. Storage units cannot be used as a residence, office, or principal place of business.
2. No plumbing connections are permitted in self-storage units with the exception of those needed for fire safety.
3. All self-storage activities shall be conducted exclusively indoors. Individual storage units may be accessed from inside the building only.

4. Any ground floor facade abutting a street shall be wrapped with active uses. Active use spaces shall be a minimum of 20 feet in width and 20 feet in depth. Individual spaces shall be furnished with water, sewer, and electrical service, or such services shall be stubbed into each individual active use bay for a future connection. This is not required in the Manufacturing and Logistics Zoning Districts or Commercial Zoning Districts.

5. Access to loading areas shall be located to the side or rear of the building.

AAAA. Self-Storage Facility: Outdoor

1. Storage units cannot be used as a residence, office, or principal place of business.

2. No plumbing connections are permitted in self-storage units with the exception of those needed for fire safety.

3. Outdoor self-storage facilities should be oriented so that storage unit access doors do not face the public right-of-way.

4. Outdoor self-storage facilities may include an area for storage of motor vehicles, recreational vehicles, and marine recreational vehicles. Storage areas shall be located in the established rear setback but shall be a minimum of 30 feet from any lot line.

5. If storage areas for vehicles are provided as described in item 4 above, they shall be screened with a Class C landscape yard along all lot lines, unless Article 20 requires a higher class of landscape yard.

BBBB. Shooting Range, Indoor

1. The indoor training and shooting facilities shall be located in a building where it is the sole use within the structure.

CCCC. Single Room Occupancy (SRO)

1. Rooming units shall be a minimum of 80 square feet, not to exceed 450 square feet total.

2. Rooming units in single room occupancy residences shall be limited to one occupant per room.

3. The building shall contain common space such as recreation areas, lounges, living rooms, dining rooms, or other congregate living spaces at a rate of five square feet per rooming unit, but totaling not less than 250 square feet. Bathrooms, laundries, hallways, the main lobby, vending areas, and kitchens shall not be counted as common space.

4. Rooming units in each building shall be accessed through one primary location, unless the building is being rehabilitated or converted from an existing structure with multiple entrances, or from a campus with multiple buildings.

5. On-site management shall be provided on a 24 hour basis per building. Adequate on-site management includes having an employee on premises twenty-four hours a day. The employee shall be accessible to residents, law enforcement personnel, and any other individuals who need to establish communication upon or about the premises. Adequate on-site management also requires that the employee has the authority to exercise control over the premises to ensure that the use of the premises does not result in littering, nuisance activities, noise, or other activities that interfere with the peaceful enjoyment and use of surrounding properties.

6. Utilities shall be mass metered.

7. A maximum of 120 units are permitted, and a minimum of 11 units is required.

8. All buildings, outdoor active recreation facilities, and off-street parking and service areas require a Class C landscape yard along all lot lines that abut an Neighborhood 1 Place Type.

DDDD. Utility (Includes Transmission and Distribution)

1. Utility Buildings

- a. Minimum building height regulations do not apply to utility buildings.
- b. Building design standards for structures on a site apply, unless it can be shown that incorporating certain elements impacts operations and/ or creates a public safety issue. The Zoning Administrator shall approve the exceptions to design standards.

2. Utility Equipment (Principal Use of Site)

- a. Utility equipment shall be set back 20 feet from all required setback lines.
- b. Utility equipment shall be screened along all lot lines by a Class C landscape yard, unless Article 20 requires a higher class of landscape yard.
- c. For electrical substations, a solid wall of a minimum of 12 feet and a maximum of 15 feet is required as part of the Class C landscape yard.

EEEE. Vehicle Dealership: Outdoor

- 1. In the CG Zoning District, outdoor vehicle dealerships shall be less than two acres in lot area.

FFFF. Vehicle Rental: Outdoor

- 1. In the CG Zoning District, outdoor vehicle rental establishments shall be less than two acres in lot area.

GGGG. Vehicle Repair Facility: Major

- 1. Repair of vehicles is prohibited outdoors. Storage of all merchandise, auto parts, and supplies shall be within an enclosed structure.
- 2. Vehicle repair facilities shall be screened along interior side and rear lot lines with a Class C landscape yard, unless a higher class of landscape yard is required by Article 20. The landscape yard is not required where such side or rear lot abuts a Manufacturing and Logistics Place Type.
- 3. No partially dismantled, wrecked, junked, or discarded vehicles may be stored outdoors on the premises. This standard does not apply to vehicles under repair.
- 4. No vehicles may be stored on site for more than 90 days.
- 5. The sale of new or used vehicles is prohibited unless separately approved.
- 6. No motor vehicles may be stored and no repair work may be conducted in any public or network required private street.

HHHH. Vehicle Repair Facility: Minor

- 1. Repair of vehicles is prohibited outdoors. Storage of all merchandise, auto parts, and supplies shall be within an enclosed structure.
- 2. Vehicle repair facilities shall be screened along interior side and rear lot lines with a Class C landscape yard, unless a higher class of landscape yard is required by Article 20. The landscape yard is not required where such side or rear lot abuts a Manufacturing and Logistics Place Type.
- 3. No partially dismantled, wrecked, junked, or discarded vehicles may be stored outdoors on the premises. This standard does not apply to vehicles under repair.
- 4. No vehicles may be stored on site for more than 90 days.

5. The sale of new or used vehicles is prohibited unless separately approved.
6. No motor vehicles may be stored and no repair work may be conducted in any public or network required private street.

IV. Waste Management Facility

1. All outdoor waste storage and processing areas shall be located a minimum of 200 feet from any lot line except for a lot in a Manufacturing and Logistics Place Type. For the purposes of this standard, the more restrictive conditions between the North Carolina Department of Environmental Quality (NC DEQ) or the City shall apply and control.
2. A waste management facility shall be located a minimum of 1,000 feet from any lot in a Neighborhood 1 or Neighborhood 2 Place Type. For the purposes of this standard, the more restrictive conditions between the NC DEQ or the City shall apply and control.
3. Screening is required as follows:
 - a. A Class A landscape yard is required along all rear and side lot lines. In Zone 1 of the landscape yard a solid fence a minimum of six feet to a maximum of eight feet in height is required.
 - b. A Class B landscape yard is required along all lot lines abutting a street. A solid fence a minimum of six feet to a maximum of eight feet in height is required with exceptions for ingress/egress, which shall be gated.

JJJJ. Wireless Telecommunications

1. General Standards for Wireless Telecommunications Systems

- a. Wireless telecommunications systems shall not be lit or marked unless required by the Federal Communications Commission (FCC) or the Federal Aviation Administration (FAA).
- b. Commercial advertising is prohibited on all components. Only signs that are part of the equipment as manufactured or warning signs is permitted.

2. Standards for Wireless Telecommunications Towers

- a. The maximum height of a wireless telecommunications tower is the minimum needed to function satisfactorily, evidence of which shall be provided to the Zoning Administrator.
- b. All wireless communication towers located in a Neighborhood 1 or Neighborhood 2 Zoning District or within 400 feet of a lot within a Neighborhood 1 or Neighborhood 2 Place Type shall be required to meet concealment standards. Such concealment methods are encouraged in all zoning districts. Wireless communication towers are considered to meet concealment standards as follows:

i. Canister Design

All antennas on the tower shall be encased within canisters with the following provisions:

- (A) The canisters shall be of a diameter no greater than 12 feet and all canisters shall be the same diameter.
- (B) There shall be an under mount on the canisters that screens the view of the antennas from the ground.
- (C) The tower and canisters shall be painted or constructed of the same color.

ii. Tree Design

The tower may be designed as a tree to blend with more natural surroundings. At a minimum the following standards shall be met:

- (A) Branches of the tree design shall screen antennas and shall extend 12 inches beyond the edge of the antennas.

(B) Mounts and antennas shall be painted green to match the branches.

c. All wireless communication towers shall meet the following setback requirements:

i. When located in a Neighborhood 1 or Neighborhood 2 Zoning District or when abutting a lot within a Neighborhood 1 or Neighborhood 2 Place Type, towers shall be setback from all lot lines a minimum of 110% of the tower height.

ii. In all other locations, towers shall meet the setback of the zoning district.

d. Wireless communication towers are prohibited as a second principal use on any lot that contains a single-family, duplex, triplex, or quadraplex dwelling.

e. All towers shall be designed and equipped with the technological and structural capability to accommodate multiple wireless communications carriers for towers. At a minimum, colocation capability is required as follows:

i. For towers up to 150 in height: A minimum of two carriers

ii. For towers over 150 in height: A minimum of three carriers

f. All wireless telecommunication towers shall be monopole construction and be painted or constructed of a neutral color that blends in with the sky including, but not limited to, galvanized silver or gray finish.

g. The use of guyed towers is prohibited. Towers shall be monopoles, meaning self-supporting with no wires, cables, or beams.

3. Standards for Wireless Telecommunications Antennas

a. Wireless communication antennas are permitted atop any building or structure, with the exception of prohibited on single-family, duplex, triplex, or quadraplex dwellings.

b. No wireless communication antenna may extend more than 20 feet above the roof of the structure.

c. Wireless telecommunication antennas on a tower shall be mounted at least 30 feet above grade, as measured to the base of the antenna.

d. All wireless communication antennas located in a Neighborhood 1 or Neighborhood 2 Zoning District or within 400 feet of a lot within a Neighborhood 1 or Neighborhood 2 Place Type shall be required to meet concealment standards. Such concealment methods are encouraged in all zoning districts. Wireless communication antennas are considered to meet concealment standards as follows:

i. Stealth Design

(A) Wireless telecommunications antennas shall be enclosed, camouflaged, screened, obscured, or otherwise not readily apparent to a casual observer.

(B) Wireless telecommunication antennas shall be located on or in structures already permitted within zoning districts, such as water towers, clock towers, streetlights, penthouses, parapet walls (shall be behind the parapet wall), and steeples, and shall be designed to blend in with the structure.

ii. Colocation

(A) Antennas that colocate on existing wireless telecommunications towers are considered to meet the requirement of concealment. However, such antennas cannot increase the overall height of the existing wireless telecommunications tower.

(B) Antennas that colocate may be mounted in the same manner as other antennas on the tower. Where antennas are located within canisters on a tower, new antennas that colocate on the tower shall be within canisters (see item 2 above).

4. Standards for Wireless Telecommunications Facilities

- a.** Wireless telecommunication facilities shall be limited to 500 square feet in gross floor area and 15 feet in height. The building height limitation may be waived by the Zoning Administrator up to a maximum height of 25 feet in order to accommodate architectural design, screening, or similar special needs.
- b.** Wireless telecommunication facilities shall be screened by a Class C landscape yard along all street frontages and lot lines. The fence shall be designed so that it is not easily climbable.
- c.** Safety devices shall be installed and maintained as needed in order to make the facility inaccessible to the public.

5. Abandoned Wireless Telecommunication Systems

Any wireless telecommunication system component that is unused for a continuous period of 12 months shall be removed by the tower owner or the property owner.

6. Nonconforming Wireless Telecommunication Systems

- a.** A properly permitted wireless telecommunication systems may remain in its present location and design.
- b.** If a wireless telecommunication tower and/or facility is replaced, it shall meet all prescribed conditions. The changing of, additions to, or removal of antenna on an existing tower as well as the collocation of additional carriers on an existing tower shall be permitted and shall not require the tower to be brought into compliance.

15.5 TEMPORARY USES: PRESCRIBED CONDITIONS

A. Mobile Car Wash

- 1. A zoning use permit is required.
- 2. A zoning use permit is valid for 90 consecutive calendar days.

B. Mobile Food Vendor

- 1. A zoning use permit is required.
- 2. A zoning use permit is valid for 365 consecutive calendar days, and may be renewed on an annual basis.
- 3. A mobile food vendor in the Neighborhood 1 and Neighborhood 2 Zoning Districts shall be permitted as an accessory use to an established nonresidential principal use.
- 4. Mobile food vendors shall not be located in a required sight distance triangle, shall not block driveways or other access to buildings, and shall not be located within a required setback.
- 5. The property owner shall submit a site plan for zoning review by the Zoning Administrator, Charlotte Department of Transportation (CDOT), and the City of Charlotte Fire Department if four or more vendors locate on a site. Any site plan approval is valid for the duration of the use.

C. Mobile Retail Vendor

- 1. A zoning use permit is required.
- 2. A zoning use permit is valid for 365 consecutive calendar days, and may be renewed on an annual basis.
- 3. A mobile retail vendor in the Neighborhood 1 and Neighborhood 2 Zoning Districts is permitted as an accessory use to an established nonresidential principal use.

4. Mobile retail vendors shall not be located in a required sight distance triangle, shall not block driveways or other access to buildings, and shall not be located within a required setback.
5. The property owner shall submit a site plan for zoning review by the Zoning Administrator, CDOT, and the City of Charlotte Fire Department if four or more vendors locate on a site. Any site plan approval is valid for the duration of the use.

D. Real Estate Project Sales Office

1. A temporary standalone real estate sales office shall be subject to the following:
 - a. A development is limited to one temporary standalone real estate sales office, which shall not be located in any required setback.
 - b. All standalone temporary real estate sales offices shall be closed and removed within 30 days after the sale or lease of the last unit of the development.
2. Temporary real estate sales offices within the development shall be closed within 30 days after the sale or rental of the last unit of the development.
3. These standards do not apply to permanent leasing offices.

E. Temporary Contractor's Office and Contractor's Yard

1. A temporary contractor's office is allowed incidental to a construction project and requires a zoning use permit. The zoning use permit is valid for the life of the project.
2. A temporary contractor's office is allowed within required setbacks with Zoning Administrator approval if they determine there is no other feasible location, and placement in a setback shall not negatively impact circulation and abutting properties.
3. The temporary contractor's office and/or yard shall be removed within 30 days of completion of the construction project.
4. Temporary contractor yards shall be screened on all sides by a fence a minimum of six feet to a maximum of eight feet in height. Fencing is not required on shared lot lines if the abutting lot also has a fence or other barrier that prohibits entry onto the lot.

F. Temporary Outdoor Entertainment

1. A zoning use permit is required.
2. A temporary outdoor entertainment event in the Neighborhood 1 and Neighborhood 2 Zoning Districts is permitted as an accessory use to an established nonresidential principal use.
3. A temporary outdoor entertainment event, including all sale and display items, shall not be located in any required setback.
4. The operator of the temporary outdoor entertainment event shall receive a zoning use permit that describes the type of event involved, and the duration of the event. Depending on the type of entertainment event, additional City or County permits may be required.
5. No one event may be longer than 14 calendar days, including set-up and breakdown time. The Zoning Administrator is authorized to extend the duration of the temporary outdoor entertainment permit beyond 14 days if there is a unique situation that warrants a time extension.
6. The event cannot locate in any minimum required parking spaces for other businesses on the site when such businesses are open.

G. Temporary Outdoor Sales

1. A zoning use permit is required.
2. Temporary outdoor sales in the Neighborhood 1 and Neighborhood 2 Zoning Districts are permitted only when sponsored by an institutional use within the district, such as a place of worship or educational facility, and takes place on the lot of such use.
3. Temporary outdoor sales, including all sale and display items, shall not be located in any required build-to zone, required setback, or sight distance triangle.
4. Any operator of a temporary outdoor sales event shall receive a zoning use permit that describes the type of event involved and the duration of the event.
5. No one event may be longer than 14 calendar days, including set-up and breakdown time. The Zoning Administrator is authorized to extend the duration of the temporary outdoor sales permit beyond 14 days. Temporary seasonal sale, such as Christmas tree lots or pumpkin patches, are allowed 60 days per sale.
6. Hours of operation are limited to between 8:00 a.m. and 9:00 p.m.
7. The temporary outdoor sales event cannot locate in any minimum required parking spaces for other businesses on the site when such businesses are open.

H. Temporary Outdoor Storage Container

1. The use of an outdoor storage container is limited to no more than 90 calendar days.
2. The 90 day limit may be waived by the Zoning Administrator if there is a unique situation that warrants a time extension.

15.6 ACCESSORY USES: PRESCRIBED CONDITIONS

A. Accessory Drive-Through

1. All establishments with an accessory drive-through facilities, except restaurants, shall provide a minimum of four stacking spaces per lane or bay. Restaurants shall provide a minimum of six-eight stacking spaces per lane or bay. The space located at the service window shall be counted in this minimum number of stacking spaces.
2. A stacking space shall be a minimum of nine feet in width and 18 feet in length.
3. All components of an accessory drive-through facility including, but not limited to, signs, stacking lanes, trash receptacles, ordering box, and drive up windows, shall be located to the rear or side of the building.
4. Drive-through lanes and circulation may not be placed between the street and the front façade of the building; however, this does not apply in the Commercial Zoning Districts, unless the site is located in a Neighborhood Center, Community Activity Center, or Regional Activity Center Place Type, and nor does it apply in the Manufacturing and Logistics Zoning Districts. In the Commercial Zoning Districts and the Manufacturing and Logistics Zoning Districts and in Commercial Zoning Districts not located in a Neighborhood Center, Community Activity Center, or Regional Activity Center Place Type, drive-through lanes and drive aisles located between the street and the facade of the building shall require parking lot screening per Section 20.5.
5. A conditional zoning is required if a site is zoned CG or CR and located in a Neighborhood Center, Community Activity Center, or Regional Activity Center Place Type.
6. For a site zoned CG or CR and located in a Neighborhood Center, Community Activity Center, or Regional Activity Center Place Type, the dimensional and design standards and open space requirements of the NC Zoning District apply to the principal building to which the accessory drive-through is attached.
57. A drive-through lane shall have bail out capability for all vehicles that enter the drive-through lane. The bail out lane shall be a minimum width of ten feet in width and run parallel to the drive-through lane. If a bail out lane

is also an interior access drive providing access to parking spaces, the bail out lane is limited to a one-way traffic pattern following the direction of the drive-through lane.

~~68.~~ For all zoning districts except the Commercial Zoning Districts and the Manufacturing and Logistics Zoning Districts, an accessory drive-through facility will only be allowed if an accessory drive-through facility was located on the site on June 1, 2023.

~~79.~~ For a restaurant/bar principal use to have an accessory drive-through, a minimum of 24 seats, indoor or outdoor, shall be required.

B. Accessory Shelter

1. An accessory shelter shall be limited to no more than 15 individuals at any one time.
2. An accessory shelter shall only operate a maximum of two days/nights per week.

~~B.~~ Drive-Through Facility

- ~~1. All drive-through facilities, except restaurants shall provide a minimum of four stacking spaces per lane or bay. Restaurants shall provide a minimum of six stacking spaces per lane or bay. The space located at the service window shall be counted in this minimum number of stacking spaces.~~
- ~~2. A stacking space shall be a minimum of nine feet in width and 18 feet in length.~~
- ~~3. All components of a drive-through facility including, but not limited to, signs, stacking lanes, trash receptacles, ordering box, and drive-up windows, shall be located to the rear or side of the building.~~
- ~~4. Drive-through lanes and circulation may not be placed between the street and the front façade of the building; however, this does not apply in the Commercial Zoning Districts and the Manufacturing and Logistics Zoning Districts. In the Commercial Zoning Districts and the Manufacturing and Logistics Zoning Districts drive-through lanes and drive aisles located between the street and the facade of the building shall require parking lot screening per Section 20.5.~~
- ~~5. A drive through lane shall have bail out capability for all vehicles that enter the drive through lane. The bail out lane shall be a minimum width of ten feet in width and run parallel to the drive through lane. If a bail out lane is also an interior access drive providing access to parking spaces, the bail out lane is limited to a one-way traffic pattern following the direction of the drive through lane.~~
- ~~6. For all zoning districts except the Commercial Zoning Districts and the Manufacturing and Logistics Zoning Districts, a drive-through facility will only be allowed if a drive-through facility was located on the site on June 1, 2023.~~

C. Dwelling - Accessory Unit (ADU)

1. The accessory dwelling unit (ADU) shall be clearly subordinate to the principal residential use.
2. An ADU is permitted as follows:
 - a. In conjunction with a single-family dwelling in any zoning district.
 - b. In conjunction with a duplex dwelling in any zoning district when each unit of the duplex is not located on a subplot.
3. Only one ADU shall be permitted on the lot.
4. The ADU and its associated principal dwelling shall be under the same ownership.
5. The ADU shall not be served by a driveway separate from that serving the principal dwelling. However, if the ADU is within an accessory structure and located on a corner lot or a lot that abuts an alley, a separate driveway may be provided from the side street or the alley, whichever applies.

6. An ADU located within the principal dwelling shall comply with the following additional requirements:
 - a. The ADU shall have a total floor area no greater than 40% of the total floor area of the principal residential use.
 - b. The ADU shall not be internally accessible from the principal residential use.
7. An ADU located within an accessory structure shall comply with the following additional requirements:
 - a. The ADU shall have a total floor area no greater than 50% of the total floor area of the principal residential use.
 - b. The structure shall not exceed the height of the principal dwelling.
 - c. The ADU may be in the established rear or side setback but shall not be any closer to any rear or side lot line than the dimension of the required side setback of the zoning district of the subject property.
 - d. Heating, ventilation, or air conditioning equipment serving an ADU within an accessory structure and architectural features such as cornices, eaves, steps, gutters, and fire escapes may encroach into the required side and rear setbacks of the accessory dwelling unit by no more than 50% of the required side and rear setbacks.

D. Helistop

1. A helistop shall be designed and constructed in accordance with all federal and state regulations.
2. A helistop shall be located at least 400 feet from a lot line of any property located in the Neighborhood 1 Place Type.

E. Home Occupation

1. A zoning use permit is required.
2. A home occupation shall be incidental to the residential use of the dwelling and shall not change the essential residential character of the dwelling.
3. No internal or external alterations inconsistent with the residential use of the building will be permitted. With the exception of a permitted sign, there shall be no evidence on the exterior of the premises or visible from the exterior of the premises that the property is used in any way other than for a dwelling. No display of products shall be visible from the street.
4. The home occupation and all related activity, including storage, equipment, and display, shall be conducted completely within a principal building or accessory structure.
5. No toxic, explosive, flammable, combustible, corrosive, etiologic, radioactive, or other restricted materials may be used or stored on-site.
6. No home occupation may dispense medication from the dwelling. No home occupation may engage in any activity that uses, stores, and/or requires the disposal of biohazardous material.
7. There shall be no perceptible noise, odor, smoke, electrical interference, vibration, or other nuisance emanating from the structure where the home occupation is located in excess of that normally associated with residential use.
8. Only residents of the dwelling may be engaged in work activities at the residence. If the home occupation has other employees, those employees may not come to the residence for work purposes, including pick-up of materials, vehicles, assignments, and/or similar purposes.
9. The home occupation cannot create greater vehicular or pedestrian traffic than is average for a residential area. The home occupation and any related activity shall not create any traffic hazards or nuisances in public rights-of-way.
10. Signs are permitted in accordance with Article 22.

11. Clients or business-related visitors shall be by appointment and limited to the timeframe of 7:00 a.m. to 8:00 p.m.
12. The storage of tractor trailers, semi-trucks, or heavy equipment, such as construction equipment used in a commercial business, is prohibited.
13. Repair and service of any vehicles, any type of heavy machinery or any type of engine, is prohibited. Small electronic repair, such as computers, is allowed.
14. Rental services, where any materials for rent are stored on-site and customers visit the residence to pick-up and return the product, are prohibited.
15. Dispatching services, where workers report to the home for dispatching, are prohibited.

F. Outdoor Entertainment

1. If at any time between the hours of 11:00 p.m. and 8:00 a.m., any outdoor entertainment occurs, it shall meet the following:
 - a. The outdoor entertainment shall be separated by a distance of at least 100 feet from a lot line of any property located in the Neighborhood 1 Place Type.
 - b. Distances are measured from the closest edge of any outdoor entertainment to the nearest lot line of property located in an Neighborhood 1 Place Type.

G. Outdoor Sales and Display

1. Retail goods establishments are permitted to have accessory outdoor sales and display of merchandise.
2. In the Neighborhood 1 and Neighborhood 2 Zoning Districts, outdoor sales and display is only permitted as an accessory use to a Neighborhood Commercial Establishment.
3. All outdoor display of merchandise shall be located adjacent to the storefront and not in drive aisles, loading zones, or fire lanes. It may be located in a parking lot so long as the minimum number of required parking spaces remain available for use.
4. No display may be placed within three feet of either side of an active door or within 15 feet directly in front of an active door.
5. A minimum clear width for pedestrian traffic of eight feet shall be provided and maintained along any interior private sidewalk.
6. Outdoor sales and display shall be prohibited in a required sidewalk or path.

H. Outdoor Seating/Activity Area

1. At-grade outdoor seating areas may be located within a required frontage setback, but shall be located behind any sidewalk, path, or planting strip. It may be allowed within an amenity zone with approval from CDOT when such amenity zone is on public property.
2. If at any time between the hours of 11:00 p.m. and 8:00 a.m., food and/or beverages are consumed in an outdoor seating/activity area, it shall meet the following:
 - a. The outdoor seating/activity area shall be separated by a distance of at least 100 feet from a lot line of any property located in the Neighborhood 1 Place Type.
 - b. Distances are measured from the closest edge of any outdoor seating/activity area to the nearest lot line of property located in a Neighborhood 1 Place Type.

I. Private Stables

1. A minimum lot size of one acre is required.
2. All structures for the keeping and maintenance of animals, equipment, or manure, and all manure piles, pits, or bins shall be located at least 50 feet from any lot line.